

A modern, multi-story villa with a swimming pool and lounge chairs. The villa features large glass windows and balconies. The pool is surrounded by a wooden deck and has several lounge chairs. The sky is overcast.

SILVERFIELD VILLA

GRANADA, SPAIN
WELCOME

SHARE YOUR MEMORIES WITH US
@SILVERFIELDVILLA

INTRODUCTION

SILVERFIELD VILLA IN SPAIN IS AN ULTRA-MODERN CONTEMPORARY PROPERTY, IT OCCUPIES AN ENVIABLE POSITION CLOSE TO THE HISTORIC CITY OF GRANADA AT THE FOOT OF THE SIERRA NEVADA MOUNTAIN RANGE. HILLWALKING, ROAD AND MOUNTAIN BIKING ARE AVAILABLE STRAIGHT FROM THE DOOR. THE PATH BEHIND THE VILLA LEADS DIRECTLY INTO THE MOUNTAINS.

THE SLOPING SITE OFFERS UNRIVALLED VIEWS DOWN TO THE CITY OF GRANADA AND UP TO THE PEAKS OF THE SIERRA NEVADA'S WHERE THE EXCELLENT SKI RESORT OFFERS SKIING/SNOWBOARDING FOR OVER 5 MONTHS OF THE YEAR. THE LOCATION OF THE VILLA IS PERFECT - LESS THAN 5 MINUTES TO THE VILLAGE OF LA ZUBIA, 15 MINUTES TO GRANADA CITY, 20 MINUTES FROM GRANADA AIRPORT AND AROUND 40 MINUTES TO SIERRA NEVADA SKI STATION BY CAR.

THE VILLA IS TRULY MASSIVE, COVERING 6 FLOORS AND OVER 15,000 SQ FT OF FLOOR AREA, ALL ACCESSED BY AN INTERNAL GLASS ELEVATOR.

ACCOMMODATION FOR UP TO 24 ADULTS AND CHILDREN IS PROVIDED. THE MASSIVE FEATURE LIST INCLUDES INTERNAL 6 FLOOR GLASS ELEVATOR, OUTDOOR INFINITY POOL, INDOOR HEATED HYDROTHERAPY POOL, SAUNA, JACUZZI, CINEMA, PRIVATE BAR, 5 OUTDOOR DECKS, TABLE TENNIS, FOOSBALL, AIR HOCKEY, POOL TABLE, GYM, INTERNET ROOM, WINE CELLAR AND A 360 DEGREE VIEWING PLATFORM WHICH DOUBLES AS A MASSAGE ROOM.

THE CONTENTS OF THIS DOCUMENT ARE A DETAILED EXPLANATION OF ALL THE FEATURES AND FACILITIES OF THE VILLA WITH OPERATING INSTRUCTIONS FOR ALL OF THE ENTERTAINMENT AND LIFESTYLE FUNCTIONS.



CONTENT

1. TRANSPORT
2. ACCESS TO THE HOUSE
3. WI-FI AND COMPUTER NETWORK
4. DOOR ENTRY AND TOUCH PANEL CONTROLS
5. OUTDOOR SWIMMING POOL
6. INDOOR SWIMMING POOL
7. BBQ AREA
8. THE GARDENS
9. THE VILLA BMW
10. THE SAUNA
11. THE GAMES ROOM
12. THE SECURITY SYSTEM
13. THE GARAGE
14. THE INTERNET ROOM
15. THE CINEMA
16. THE KITCHEN
17. THE DINING AREA
18. THE FAMILY ROOM
19. THE LIVING AREA
20. THE INTERNAL GLASS ELEVATOR
21. THE DUAL AND QUAD SUITES
22. THE BUNK ROOMS
23. THE MASTER BEDROOM
24. THE INDOOR GYM AND JACUZZI
25. THE OUTDOOR GYM
26. THE PRIVATE BAR
27. THE VIEWING DECK / MASSAGE ROOM
28. WASHING MACHINES
29. RESTAURANTS
30. OTHER ACTIVITIES AND THINGS TO DO
31. SHOPPING MALLS AND GROCERIES
32. HILL WALKING
33. PERSICI BAY CLOTHING DISCOUNT
34. THE SILVERFIELD VILLA CHEF
35. HOSPITAL
36. OTHER SERVICES INCLUDING WEDDINGS AND ENTERTAINMENT



I. TRANSPORT

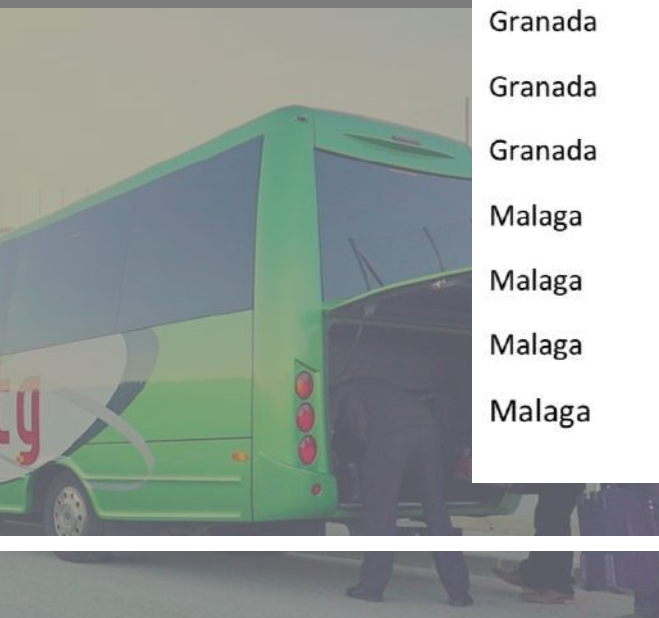
WE CAN ARRANGE AIRPORT TRANSFERS AND LOCAL JOURNEYS FROM A WIDE RANGE OF COMPANIES BUT WE GENERALLY USE A SINGLE COMPANY THAT SPECIALISE IN EXECUTIVE TRANSPORT. THEIR VEHICLES ARE ALL MODERN MERCEDES CARS – GENERALLY E CLASS FOR UP TO 4 PEOPLE AND VITO FOR UP TO 8 (WITH LUGGAGE). THEY ALSO PROVIDE A VERY HIGH-QUALITY AIR CONDITIONED BUS WHICH IS USEFUL FOR LARGE GROUPS.

COSTS ARE A LITTLE HIGHER THAN THE AVERAGE IN GRANADA AND WE ARE HAPPY TO ARRANGE TRANSFERS WITH OTHER LOCAL COMPANIES BUT AS A LARGE FAMILY WE ARE HAPPY TO PAY A LITTLE EXTRA TO HAVE SMARTLY DRESSED DRIVERS, WHO MEET YOU WITHIN THE AIRPORT, HELP WITH BAGS AND TAKE YOU TO A HIGH-QUALITY VEHICLE AND DRIVE DIRECTLY TO THE VILLA. THEY KNOW THE LOCATION AS WE USE THEM REGULARLY.

WHETHER ARRIVING AT GRANADA OR MALAGA AIRPORTS OR SIMPLY TAKING A TRIP INTO THE CITY FOR A LARGE GROUP, WE STILL FIND THAT THE FARES CHARGED ARE LOWER THAN FOR A TAXI IN THE UK OR USA. THEIR SERVICE IS ALSO CONSISTENTLY EXCELLENT, THEY ARRIVE ON TIME (OR OFTEN EARLY) AND ARE HAPPY TO WAIT WHILE OUR (SOMETIMES LARGE) GROUP GET THEMSELVES READY TO BOARD THE VEHICLE. THEY ALSO HANDLE FLEXIBLE PICK UP TIMES VERY WELL. THIS IS VERY IMPORTANT TO US AS GOING FOR LUNCH, DINNER, SHOPPING OR VISITING A NIGHTCLUB IS RARELY SOMETHING WHERE WE CAN DEFINE AN EXACT PICKUP TIME.

THE CURRENT COSTS FOR THE VARIOUS VEHICLES FROM GRANADA OR MALAGA AIRPORTS ARE SHOWN BELOW. THESE COSTS ARE SUBJECT TO CHANGE BUT WE WILL ENDEAVOUR TO KEEP THIS LIST UP TO DATE AT ALL TIMES:

Airport	Vehicle	Cost per trip
Granada	Standard cab (4 passengers)	40 euros
Granada	Mercedes E Class (4 passengers)	50 euros
Granada	Mercedes Vito (8 passengers)	60 euros
Granada	Bus (24 passengers)	150 euros
Malaga	Standard cab (4 passengers)	150 euros
Malaga	Mercedes E Class (4 passengers)	160 euros
Malaga	Mercedes Vito (8 passengers)	180 euros
Malaga	Bus (24 passengers)	250 euros



2. ACCESS TO THE HOUSE

SILVERFIELD VILLA GUESTS FROM INTERNATIONAL LOCATIONS WILL NORMALLY FLY INTO EITHER GRANADA OR MALAGA AIRPORTS.

THE AIRPORT IN GRANADA IS SMALL AND VERY QUICK TO ENTER OR EXIT BUT THE CHOICE OF FLIGHTS IS NORMALLY QUITE LIMITED. DIRECT FLIGHTS CAN BE MADE FROM LONDON CITY OR GATWICK AS WELL AS PARIS AND SOME LOCATIONS WITHIN SPAIN. 2 STOP FLIGHTS CAN BE MADE TO THIS AIRPORT FROM A HUGE VARIETY OF LOCATIONS VIA EITHER MADRID OR BARCELONA.

MALAGA AIRPORT IS MUCH LARGER AND OFFERS DIRECT FLIGHTS FROM A WIDE VARIETY OF LOCATIONS IN THE UK AND BEYOND. TRANSFER FROM MALAGA AIRPORT TAKES AROUND 1 HOUR AND 20 MINUTES OUTSIDE OF RUSH HOUR AND WE CAN HELP WITH ARRANGEMENTS FOR TRANSPORT FOR SMALL OR LARGE GROUPS.

WE HAVE A GOOD LOCAL CONTACT WITH A TAXI FIRM WHO OPERATE HIGH QUALITY VEHICLES DRIVEN BY UNIFORMED DRIVERS WHO WILL MEET OUR GUESTS IN THE AIRPORT, HELP WITH BAGS AND DRIVE THEM DIRECTLY TO THE VILLA DOOR. THEY OFFER MERCEDES E CLASS VEHICLES FOR UP TO 4 PEOPLE, MERCEDES VITO PEOPLE CARRIERS FOR UP TO 8 PEOPLE AND ALSO HAVE A VERY MODERN BUS (SEE PICTURE ON PREVIOUS PAGE) THAT CAN TAKE UP TO 23 PASSENGERS. THEIR RATES ARE LOWER THAN WHAT WOULD BE EXPECTED IN THE UK, AROUND 150-250 EUROS PER TRIP DEPENDING ON THE CHOICE OF VEHICLE. WE CAN ALSO OFFER LOWER COST TRANSFERS USING LOCAL TAXIS WHICH ALSO TEND TO BE WELL MAINTAINED VEHICLES.

THE VILLA IS SET IN ITS OWN GROUNDS WHICH ARE ACCESSED BY EITHER THE AUTOMATIC GARAGE DOOR OR SINGLE DOOR TO THE ROADWAY. ONCE INSIDE THE VILLA SITE, ACCESS TO THE HOUSE IS VIA A KEY ON THE MAIN FRONT DOOR. ALL OTHER EXTERNAL DOORS ARE ON HIGHER FLOORS AND PROVIDE ACCESS ONLY TO THE BALCONY AREAS.

WHEN GUESTS ARRIVE, THEY WILL BE GREETED AT THE PROPERTY BY THE VILLA MANAGER, WHO WILL PROVIDE A DUAL SET OF KEYS FOR THE FRONT DOOR AND REMOTES FOR THE GARAGE EXTERIOR DOOR AND THE GARAGE ITSELF. THE VILLA MANAGER WILL ALSO TAKE THIS OPPORTUNITY TO PROVIDE A TOUR OF THE VILLA AND EXPLAIN THE OPERATION OF THE HEATING, AIR CON AND ENTERTAINMENT SYSTEMS.

2. ACCESS TO THE HOUSE

FOR GUESTS RENTING CARS, THE ADDRESS OF THE VILLA IS AS FOLLOWS:

CALLE GÜÉJAR SIERRA, 2
18140 LA ZUBIA
GRANADA
SPAIN

PLEASE NOTE THAT THE VILLA IS SOMETHING OF A TOURIST ATTRACTION IN THE LOCAL AREA AND IT IS NOT UNUSUAL TO SEE LOCAL PEOPLE COMING TO VIEW THE EXTERIOR AND TAKE PICTURES. WE HAVE PLANTED TREES ALONG THE FRONT PART OF THE GARDEN TO MINIMISE THE INTRUSION THIS MAY CAUSE FOR OUR GUESTS. MAPS TO THE VILLA LOCATION FROM THE NEAREST TOWN OF LA ZUBIA AND FROM THE CITY OF GRANADA CAN BE FOUND BELOW:

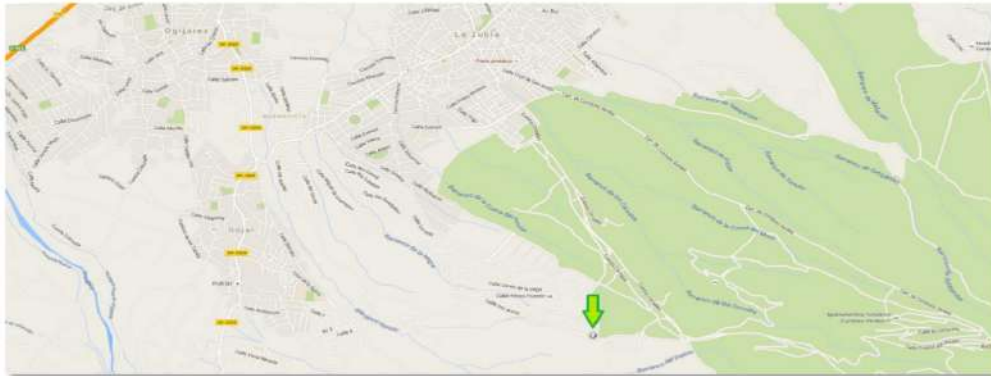
GOOGLE MAPS LINK FROM MALAGA AIRPORT:

[HTTPS://GOO.GL/MAPS/VMO9EAFVQKE2](https://goo.gl/maps/VMo9EAFVQKE2)

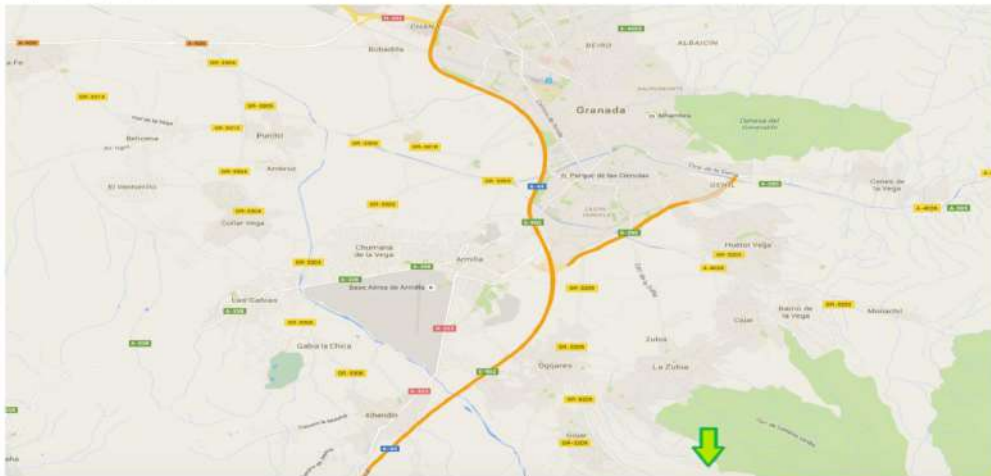
GOOGLE MAPS LINK FROM GRANADA AIRPORT:

[HTTPS://GOO.GL/MAPS/9HQL3MON2KQ2](https://goo.gl/maps/9HQL3MON2KQ2)

Map from La Zubia



Map from Granada



3. WI-FI & COMPUTER NETWORK

DUE TO THE SIZE OF THE VILLA, THERE ARE 4 SEPARATE WI-FI NETWORKS COVERING THE PROPERTY. THESE HAVE BEEN CONFIGURED SO THAT GUESTS WILL ONLY NEED TO JOIN A SINGLE NETWORK WHICH WILL APPEAR ON PHONES OR LAPTOPS AS "SILVERFIELD VILLA". THE PASSWORD FOR THE NETWORK IS "SILVERFIELD".

WIRED ACCESS TO THE HIGH SPEED BROADBAND NETWORK IS AVAILABLE IN EVERY ROOM VIA STANDARD RJ45 NETWORK CONNECTIONS.

THE COMPUTER NETWORK IS PERMANENTLY WIRED TO THE MEDIA BOXES TO BE FOUND ATTACHED TO EACH TV SCREEN IN THE LIVING ROOM, DINING AREA AND BEDROOMS. ADDITIONALLY THE NETWORK IS CONNECTED TO THE 2 PC SYSTEMS IN THE INTERNET ROOM AND THE PC IN THE CINEMA.



4. DOOR ENTRY & TOUCH PANEL CONTROLS

THE EXTERIOR DOOR TO THE PROPERTY IS SOME DISTANCE FROM THE MAIN DOOR TO THE VILLA SO AN AUTOMATIC DOOR ENTRY SYSTEM HAS BEEN INSTALLED WHICH ALLOWS GUESTS TO PROVIDE AUTOMATIC ACCESS. THE DOOR ENTRY UNITS ARE POSITIONED AT VARIOUS LOCATIONS AROUND THE HOUSE AND PROVIDE A SMALL VIDEO SCREEN TO SHOW THE CALLER. THE PHONE ATTACHED TO EACH UNIT CAN BE USED TO SPEAK TO THE PERSON AT THE DOOR AND THE BUTTON WITH THE 'LOCK' SYMBOL CAN BE USED TO PROVIDE ACCESS.

THE WALL TOUCH PANELS ALLOW CONTROL OF A LARGE NUMBER OF AUTOMATED FUNCTIONS IN THE VILLA.

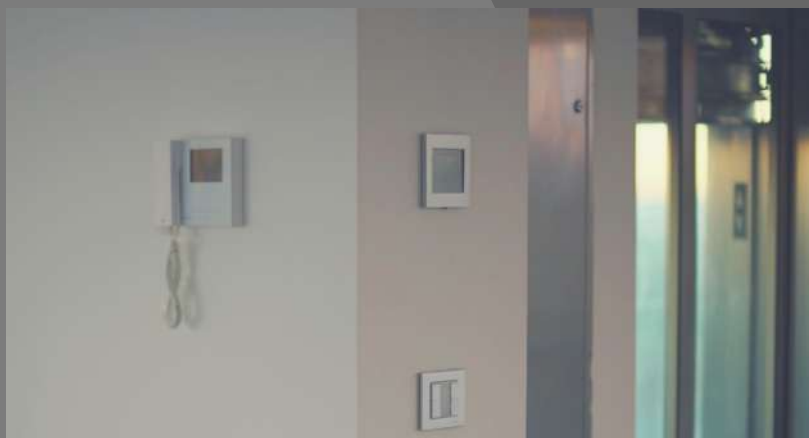
THE HEATING/COOLING SYSTEM IN THE VILLA USES WARM AIR (FOR QUICK HEATING), UNDERFLOOR HEATING AND COLD AIR COOLING. THE TEMPERATURES AND FUNCTIONS CAN BE SELECTED ON THE TOUCH PANEL.

THE AUTOMATIC BLINDS ARE ALSO CONTROLLED BY THE PANEL, WHERE THEY CAN BE OPENED OR CLOSED FULLY OR PARTIALLY. IN THE BEDROOMS, THERE IS A DOUBLE BLIND SYSTEM CONSISTING OF A SEMI-TRANSLUCENT SCREEN AND A BLACK OUT BLIND FOR MORE FLEXIBILITY.

THE LED LIGHTING SYSTEM IN EACH AREA HAS SCENE SETTINGS WHICH CAN ALSO BE FOUND ON THE TOUCH PANEL ALONG WITH A VARIETY OF OTHER FUNCTIONS.

IT IS NOT POSSIBLE TO SHOW A STANDARD CONTROL PANEL AS EACH ONE IS DIFFERENT DEPENDING ON ITS LOCATION BUT THE TOUCH SCREEN ICONS ARE FAIRLY SELF-EXPLANATORY AND THE VILLA MANAGER WILL SHOW THE GUESTS HOW TO USE THE PANELS WHEN THEY ARRIVE.

IN ADDITION TO THE TOUCH PANELS, THE VILLA IS EQUIPPED WITH LED INDICATION LIGHT SWITCHES WHICH HAVE 4 BUTTONS ON EACH PANEL. THESE SWITCHES CONTROL THE LIGHTING IN THEIR LOCAL AREAS



5. OUTDOOR SWIMMING POOL

THE OUTDOOR SWIMMING POOL IS A ROUGHLY TRIANGULAR SHAPE WITH STEPPED ENTRY FROM THE CORNER CLOSEST TO THE VILLA. IT HAS AN INFINITY EDGE WHERE THE WATER POURS OVER ON THE SIDE LOOKING DOWN TOWARDS THE CITY OF GRANADA. THIS WATER IS THEN COLLECTED IN A SIDE POND, FILTERED AND PUMPED BACK INTO THE SWIMMING POOL.

THE POOL IS MASSIVE, OVER 15M ALONG ITS LONGEST EDGE AND HAS NO DEEP END TO REDUCE THE AMOUNT OF WORRY THAT PARENTS MAY FEEL FOR YOUNG CHILDREN WHEN USING IT. THE DEPTH IS UNIFORM OVER THE POOL AREA AT AROUND 4 FEET SO MOST CHILDREN OVER THE AGE OF 4 SHOULD BE ABLE TO STAND UP WITH THEIR HEADS ABOVE THE WATER LINE.

THE POOL IS NOT HEATED (UNLIKE THE INDOOR POOL) AND IS NORMALLY IN USE FROM APRIL TO OCTOBER DEPENDING ON THE EXTERNAL TEMPERATURE (AND THE HARDINESS OF THE GUEST).

IT IS FITTED WITH AN AUTOMATIC FILTRATION SYSTEM AND IS CHLORINE CHECKED AND CLEANED ON A WEEKLY BASIS. THE AREA SURROUNDING THE POOL IS DECKED WITH A VERY HIGH QUALITY EXTRUDED COMPOSITE DECKING SYSTEM WHICH DOES NOT CORRODE, DISCOLOUR OR PRODUCE SPLINTERS.



6. INDOOR SWIMMING POOL

THE INDOOR POOL IS HEATED AND CAN BE USED ALL YEAR ROUND. IT IS EASILY BIG ENOUGH FOR ALL THE OCCUPANTS OF THE HOUSE BUT IS PROBABLY A LITTLE SMALL FOR SWIMMING 'LENGTHS'. FOR THIS REASON THERE IS A RESISTANCE SWIMMING MACHINE UNDER THE WATER LINE AT THE FAR END. BY PUSHING THE BUTTON ON THIS DEVICE IT WILL BEGIN TO DRIVE WATER AT THE SWIMMER SO THAT THEY CAN SWIM 'WITHOUT MOVING'. THE STRENGTH OF THE PUSH CREATED BY THE MACHINE IS VARIABLE BY A DIAL BESIDE THE ON/OFF SWITCH.

THE POOL IS FITTED WITH A 168 JET HYDROTHERAPY SYSTEM MAINLY POSITIONED AROUND THE SEATING AREA ON THE RIGHT OF THE PICTURE. THE JETS ARE CONTROLLED BY A NUMBER OF PUSH BUTTON ON THE WALL AND OFFER BACK MASSAGE, FOOT MASSAGE AND JACUZZI FUNCTIONS.

A LARGE WATER SPOUT ON THE LEFT HAND SIDE AND A WATER BLADE MOUNTED ON THE WALL ON THE RIGHT HAND SIDE REFILL THE POOL FROM THE FILTRATION SYSTEM. THE WATER SPOUT IS CONTROLLABLE, THE WATER BLADE IS AUTOMATIC. FINALLY THE POOL HAS A CHROMA THERAPY SYSTEM FITTED. WE ARE NOT TOO SURE WHAT THE 'THERAPY' MEANS BUT IT IS BASICALLY A SET OF LARGE LEDs WITH VARIOUS FUNCTIONS THAT CAN BE ACCESSED BY PUSHING THE SWITCH ON THE WALL ON THE RIGHT HAND SIDE. THE CONTROL IS A LITTLE TRICKY AS IT IS A SINGLE SWITCH BUT BY PRESSING ONCE, TWICE OR THREE TIMES IN SUCCESSION, THE LIGHTS CAN BE CHANGED FROM STEADY COLOURS TO GRADUALLY SWEEPING COLOUR SCHEMES IN A RANGE OF COLOUR COMBINATIONS.

THE POOL IS SURROUNDED BY THE SAME COMPOSITE DECKING FROM THE OUTSIDE AND HAS ALSO BEEN BUILT TO THE SAME DEPTH FOR SAFETY. THE ENTRY STEPS CAN BE SEEN FRONT LEFT OF THE PICTURE.



7. BBQ AREA

THE BBQ AREA IS TO BE FOUND ON THE BEDROOM LEVEL LOOKING DOWN ON THE SWIMMING POOL AREA OVER A GLASS WALL. IT HAS COMPOSITE DECKING AND A GARDEN AREA IMMEDIATELY BEHIND THAT HAS BEEN PLANTED WITH SOME VERY OLD OLIVE TREES SPECIALLY SOURCED FOR THE VILLA.

THE BBQ ITSELF IS A PROFESSIONAL STANDARD STAINLESS STEEL SYSTEM THAT OFFERS PRECISE TEMPERATURE CONTROL AS WELL AS A LARGE AMOUNT OF STORAGE AND EVEN AN OUTDOOR SINK. IT IS EXTREMELY LARGE TO ALLOW COOKING FOR ALL VILLA GUESTS AND HAS AMPLE 'STAY WARM' AREAS UNDER THE HOOD FOR THE STORAGE OF COOKED MEATS ETC.

IGNITION IS AUTOMATIC AND THE BURNER CONTROLS ARE VERY EASY TO USE. A TEMPERATURE GAUGE ON THE FRONT HOOD IS ALSO VERY USEFUL. TWO ALUMINIUM OUTDOOR TABLES ARE PLACED IN THE AREA ALLOWING ALL HOUSE GUESTS TO SIT TOGETHER, ALTHOUGH, IF THE VILLA IS FULLY OCCUPIED AT 24 GUESTS IT MIGHT BE NECESSARY TO SPLIT THE TABLES APART TO ALLOW SEATING AT BOTH ENDS. THERE IS AMPLE ROOM IN THE AREA TO DO THIS. BOTH TABLES ARE EXTENDABLE AND ARE SURROUNDED BY MODERN ACRYLIC ALL WEATHER CHAIRS. THE BALCONY AREA OFFERS WONDERFUL VIEWS, NOT ONLY TO THE OUTDOOR POOL AREA BELOW, BUT ALSO DOWN TO THE CITY OF GRANADA ITSELF.

THE SEATING AREA IS VERY FLEXIBLE AS WE HAVE A TOTAL OF 24 CHAIRS. THESE ARE "ALL WEATHER" UNITS THAT CAN BE LEFT OUTSIDE ALL YEAR FOR CONVENIENCE.

A NUMBER OF SEATING CONFIGURATIONS ARE POSSIBLE. BOTH TABLES SHOWN IN THE PICTURE ABOVE CAN BE EXTENDED TO ALLOW MORE SEATING ALONG THE LONG END. THIS ALLOWS A SINGLE SEATING CONFIGURATION FOR 24 WITH NO CHAIRS AT EITHER END.

ALTERNATIVELY THE 2 TABLES CAN BE SEPARATED AND A TOTAL OF 12 GUESTS CAN BE SEATED AROUND EACH TABLE USING 2 CHAIRS AT EACH END AND THE TABLES NOT EXTENDED. FINALLY THE TABLES CAN BE SEPARATED AND EXTENDED TO SEAT 12 PEOPLE EACH MORE COMFORTABLY WITH ONLY ONE PERSON AT EACH END.

THE BBQ AREA IS LARGE AND CAN HANDLE ANY OF THE ABOVE CONFIGURATIONS. THE AREA CAN ALSO BE USED FOR OUTDOOR EATING WHEN THE BBQ IS NOT IN USE, ALTHOUGH THE KITCHEN IS ON THE LEVEL BELOW. THE PREPARATION AREA AROUND THE BBQ CAN BE USED AS A WORKSPACE IN THIS CASE AND THE ELEVATOR ALLOWS SERVERS TO AVOID USING THE STAIRS.

8. GARDENS

THE GARDEN AREAS OUTSIDE OF THE MAIN VILLA AND OUTDOOR POOL AREA HAVE ALL BEEN PROFESSIONALLY LANDSCAPED. THE DESIGN IS VERY SIMPLE AND MODERN AVOIDING COLOURFUL PLANTS IN FAVOUR OF GREEN CLIMBERS AND FERNS AS WELL AS TREES.

A FENCE HAS BEEN CONSTRUCTED ALONG THE BACK WALL BETWEEN THE VILLA PLOT AND THE REAR TRACK (WHICH PROVIDES DIRECT WALKING AND BIKING ACCESS TO SIERRA NEVADA). THIS INCREASES PRIVACY AND THE CLIMBING PLANTS WILL SOON GROW TO HIDE THE FENCE AND CREATE A SOLID 'LIVING WALL'. THE GARDEN IS SET ON MULTIPLE LEVELS DUE TO THE SLOPING NATURE OF THE PLOT AND INCORPORATES A NUMBER OF PLANTING AREAS AT DIFFERING HEIGHTS WHICH CREATES A VERY ATTRACTIVE BACKDROP TO THE VILLA.



THE WALKWAYS AND STEPS ARE COVERED IN AN ANTI-SLIP COATING WHICH WE HAVE FOUND TO BE 'NOT VERY EFFECTIVE' DURING HEAVY RAIN SO PLEASE BE CAREFUL WHEN THEY ARE WET.

THE EXTERIOR WALLS AND SOME OF THE SURROUNDS ARE MADE FROM A MATERIAL CALLED COR-TEN STEEL WHICH IS VERY POPULAR WITH MODERNIST ARCHITECTS. IT IS A TYPE OF OXIDISED STEEL THAT IS VERY LOW MAINTENANCE ONCE INSTALLED SO IT SHOULD LOOK THE SAME FOR MANY YEARS UNLIKE A LOT OF EXTERIOR BUILDING MATERIALS. THIS MATERIAL IS ALSO USED IN VARIOUS LOCATIONS IN THE INSIDE LIVING SPACE.

9. THE VILLA BMW



SILVERFIELD VILLA PROVIDES A CAR FOR THE USE OF ITS GUESTS DURING THEIR STAY. IT IS A 7 SEAT BMW GRAND TOURER THAT WAS PURCHASED NEW IN JULY 2015. WE DECIDED TO GO FOR THIS MODEL AS IT IS NOT EXCESSIVELY LARGE BUT CAN STILL CARRY 7 PEOPLE. CAR PARKING SPACES IN GRANADA ARE FAMOUS FOR BEING VERY TIGHT.

STORAGE IS LIMITED WHEN ALL SEATS ARE USED BUT BIG WHEN THE REAR SEATS ARE FOLDED DOWN AND MASSIVE WHEN THE MIDDLE AND REAR SEATS ARE STORED. WE HAVE MANAGED TO CARRY SHOPPING FOR A WEEK FOR 24 PEOPLE FROM THE LOCAL CARREFOUR IN THIS FINAL CONFIGURATION.

THE VEHICLE IS FITTED OUT TO A VERY HIGH STANDARD, IT HAS ELECTRIC WINDOWS, PARKING SENSORS, SATNAV,, HIGH QUALITY SOUND SYSTEM AND ELECTRIC TAIL GATE.

THE GEARBOX IS AUTOMATIC AND THE ENGINE IS THE LARGER DIESEL VARIANT SO IT HAS PLENTY OF POWER FOR THE STEEP ROADS AROUND LA ZUBIA.

PARKING IS AMPLE AT THE VILLA. THE GARAGE IS LARGE AND THERE IS AN AREA BETWEEN THE EXTERIOR GARAGE DOOR AND THE INTERIOR GARAGE DOOR LARGE ENOUGH FOR 4 CARS. THERE IS ALSO PLENTY OF PARKING ALONG THE ROAD AT THE FRONT OF THE PROPERTY.

ONE THING TO NOTE IS THAT THE DRIVEWAY AREA IS QUITE STEEP AND IF THE CAR IS PARKED 'FRONT FIRST' AFTER A LARGE SHOPPING TRIP, BAGS PACKED AGAINST THE TAILGATE CAN DROP OUT WHEN IT IS OPENED. WE HAVE LOST MANY EGGS AND A COUPLE OF NICE BOTTLES OF WINE TO THIS OCCURRENCE...

10. THE SAUNA

THE SAUNA IS LOCATED IN THE BASEMENT LEVEL UNDER THE MAIN LIVING AREA BESIDE THE INDOOR POOL. THIS IS THE BEST PLACE FOR IT AS THE POOL AREA IS KEPT AT A HIGH TEMPERATURE FROM THE HEATED POOL WATER. ADJACENT TO THE SAUNA, WE ALSO HAVE A SHOWER UNIT WHICH ALLOWS GUESTS TO CHOOSE BETWEEN THE POOL AND THE SHOWER AFTER THEIR SAUNA.

EVEN THOUGH THE POOL AND SAUNA ARE IN THE BASEMENT, THERE IS STILL AN EXCELLENT SOURCE OF NATURAL LIGHT FROM THE THIN STRIP OF WINDOWS ALONG THE TOP WALL THAT CAN BE SEEN IN THIS PICTURE. TOWARDS THE MIDDLE OF THE BASEMENT LEVEL, THERE IS NO NATURAL LIGHT BUT THIS IS DESIRABLE AS THIS AREA CONTAINS THE CINEMA. THE SAUNA IS ELECTRONICALLY CONTROLLED FROM A PANEL ON THE OUTSIDE AND HAS ALL THE USUAL ACCESSORIES SUCH AS THE HOT COALS, WATER BUCKET AND SOFTENED INTERIOR LIGHTING.



11. THE GAMES ROOM

THE GAMES ROOM IS A LARGE AREA IN THE BASEMENT LEVEL THAT FILLS THE SPACE BETWEEN THE INDOOR POOL, THE CINEMA AND THE INTERNET ROOM. IT HAS A NUMBER OF HIGH QUALITY GAMES TABLES FOR GUESTS TO PASS THE TIME.

THE POOL TABLE IS A PROFESSIONAL STANDARD 9FT AMERICAN SIZE SLATE BED UNIT. THE TABLE TENNIS TABLE IS A HEAVY DUTY STATIC UNIT (NOT THE NORMAL FOLDING STYLE).

THE FUSSBALL TABLE IS A FULL SIZED, LEVELLED, ROBUST UNIT WITH THE FULL 4 BARS ON EACH SIDE. THE CINEMA HAS AN AUTOMATIC BLIND SYSTEM TO ALLOW SEPARATION FROM THE GAMES ROOM.

12. THE SECURITY SYSTEM



SILVERFIELD VILLA IS PROTECTED BY A HIGHLY ADVANCED SECURITY SYSTEM CONTROLLED BY TOUCH PANELS IN 2 LOCATIONS, ONE ON THE MAIN FLOOR AND ONE ON THE BEDROOM LEVEL. THE VILLA MANAGER WILL PROVIDE INSTRUCTION ON THE USE OF THE SYSTEM WHICH IS VERY STRAIGHTFORWARD (2 BUTTON PUSHES TO SET AND 1 BUTTON PUSH TO DISARM). THE SYSTEM CAN ALSO BE OPERATED BY REMOTE CONTROL.

IT IS POSSIBLE TO SET THE SECURITY SYSTEM FOR THE BOTTOM FLOORS ONLY. THIS MEANS THAT LATER AT NIGHT, GUESTS CAN STILL MOVE FREELY ON THE UPPER LEVELS WITHOUT TRIGGERING AN ALARM.

THE SYSTEM EMPLOYS A NUMBER OF DIFFERENT TYPES OF SENSOR BUT IT IS MAINLY BASED AROUND A 16 CAMERA INSTALLATION WITH MOTION DETECTION. THE DETECTION ALGORITHM IS INTELLIGENT AND IS ABLE TO DISTINGUISH BETWEEN A HUMAN BEING AND AN ANIMAL FOR INSTANCE.

ALL VIDEO FEEDS ARE RECORDED TO A DIGITAL RECORDING SYSTEM IN THE BASEMENT AND ARE ALSO UPLINKED LIVE TO A PRIVATE SECURITY COMPANY WHO PROVIDE PROTECTION FOR THE VILLA. IF AN ALARM IS TRIGGERED, THIS COMPANY WILL CALL THE VILLA MANAGER AND ALSO ACCESS THE LIVE FEEDS TO ASCERTAIN IF AN INTRUDER HAS BEEN DETECTED.

IT IS VERY UNLIKELY THAT ANY POTENTIAL BURGLAR WOULD EVER EVEN REACH THE VILLA, AS THE OUTDOOR INFRA-RED CAMERA SYSTEM WOULD DETECT THEM AS SOON AS THEY SET FOOT ON THE PROPERTY AND TRIGGER AN ALARM. FORTUNATELY, THE GRANADA AREA HAS A VERY LOW CRIME RATE BUT THE SECURITY OF OUR GUESTS IS VERY IMPORTANT TO US.

13. THE GARAGE



THE VILLA GARAGE IS SPECIFIED AS BEING SUITABLE FOR 4 CARS, BUT WE FIND THAT TO BE VERY TIGHT ON BOTH THE LENGTH AND THE WIDTH. EVEN ON TRIPS WHEN WE HAVE HAD MULTIPLE CARS AT THE SITE, WE HAVE TENDED TO USE THE SPACE BETWEEN THE GARAGE DOOR AND THE EXTERIOR DOOR FOR PARKING AND ONLY PUT ONE CAR (IF ANY) IN THE GARAGE. THIS ALLOWS US TO USE THE HUGE SPACE IN THE GARAGE FOR OTHER FUNCTIONS.

THERE ARE A LARGE NUMBER OF BIKES IN THE VILLA. WE HAVE 3 STANDARD MOUNTAIN BIKES, 5 FOLDING MOUNTAIN BIKES (USEFUL IF GUESTS WANT TO DRIVE TO A DIFFERENT MOUNTAIN LOCATION) AND OUR LATEST PURCHASE OF 5 ELECTRIC MOUNTAIN BIKES WHICH SOME OF OUR GUESTS HAVE DECLARED TO BE THE BEST INVENTION - EVER!

THE BIKES (AND CHARGERS IN THE CASE OF THE ELECTRIC ONES) ALL HANG ON THE WALL OF THE GARAGE WHICH USES SOME OF THE SPACE BUT ALLOWS VERY EASY ACCESS AND ENTRY TO THE HOUSE.

WE ALSO USE SOME OF THE GARAGE SPACE, ALONG WITH THE STORAGE ROOM AT THE BACK OF THE GARAGE TO STORE ALL OF THE NECESSARY SUPPLIES FOR SUCH A LARGE PROPERTY. THIS IS WHERE GUESTS CAN FIND EXTRA PLATES, WINE GLASSES, TOWELS, BATH ROBES ETC IF NEEDED IN CASE OF BREAKAGES.

14. THE INTERNET ROOM

THIS ROOM WAS BUILT TO ALLOW GUESTS TO ACCESS A FULL INTERNET CONNECTED PC RATHER THAN AN IPAD OR LAPTOP. IT HAS TWO LARGE DESKS WITH COMFORTABLE OFFICE CHAIRS AND PCs CONNECTED TO MASSIVE 60" HIGH RESOLUTION MONITORS.

THE ROOM HAS OFFICE TYPE FLOORING AND IS BOUNDED ON EITHER SIDE WITH DECORATIVE PEBBLES CONTAINING FREE STANDING LED LIGHTING.

THE INTERNET ROOM IS OPEN AT THE ROOF THROUGH TO THE GLASS BALCONIED LIVING AREA ABOVE PROVIDING A SENSE OF IMMENSE SPACE.

WE HAVE FOUND THIS AREA TO BE HUGELY POPULAR WITH OLDER KIDS WHO SEEM TO SPEND HOURS DOWN THERE ACCESING GAMES SYSTEMS AND SOCIAL MEDIA. IF YOU CANT FIND YOUR KIDS IN THE VILLA (WHICH HAPPENS A LOT) TAKE A LOOK AT THE INTERNET ROOM FIRST....

THE INTERNET ROOM IS SEPARATED FROM THE POOL TABLE AREA OF THE GAMES ROOM BY A FLOOR TO CEILING GLASS WALL, IT IS ENTERED THROUGH A GLASS DOOR.



15. THE CINEMA

THE VILLA CINEMA IS A FABULOUS PLACE FOR ENTERTAINING KIDS OR ADULT GUESTS. IT OCCUPIES THE CENTRAL AREA OF THE BASEMENT LEVEL WHERE THERE IS NO NATURAL LIGHT. THIS ALLOWS THE ULTRA- BRIGHT 10,000 LUMENS PROJECTOR SYSTEM TO WORK AS WELL AS MOST COMMERCIAL CINEMAS.

THE ENTIRE BACK WALL OF THE CINEMA IS USED AS THE SCREEN, WHICH DEPENDING ON THE ASPECT RATIO CAN BE MORE THAN 15 FEET DIAGONALLY.

THE PROJECTOR IS SOURCED BY A MEDIA PC RUNNING KODI, WHICH PROVIDES THE LATEST STREAMING MOVIES AND TV PROGRAMS AS WELL AS LIVE SPORTS AND EVENTS FROM AROUND THE WORLD. ALL THIS IS COUPLED TO A PROFESSIONAL GRADE DOLBY 5.1 SURROUND SOUND SYSTEM THAT CAN LITERALLY SHAKE THE VILLA AT HIGH VOLUME.



THE REMOTE CONTROLS IN THE CINEMA CAN LOOK A BIT DAUNTING BUT THE OPERATION IS QUITE SIMPLE. THE PROJECTOR REMOTE IS REALLY ONLY USED TO SWITCH THE PROJECTOR ON AND OFF (POWER BUTTON) OR THIS CAN BE DONE BY PUSHING THE RED BUTTON ON THE SIDE OF THE PROJECTOR ITSELF. THE AMP REMOTE IS NORMALLY ONLY USED FOR CONTROL OF VOLUME AND THE KODI INTERFACE IS CONTROLLED BY THE GYRO RADIO REMOTE WHICH EVEN HAS A SMALL KEYBOARD ON THE BACK TO ALLOW GUESTS TO SEARCH FOR MOVIES. KODI INSTALLATIONS CHANGE OVER TIME SO IT IS NOT POSSIBLE TO PRINT EXACT INSTRUCTIONS, BUT CURRENTLY, CLICK ON "COVENANT" ON THE MAIN SCREEN AND FOLLOW THE ON SCREEN OPTIONS TO FIND WHAT YOU WANT TO WATCH.

15. THE CINEMA

THE CINEMA WAS SPECIALLY BUILT ON 3 DIFFERENT LEVELS TO SIMULATE A REAL THEATRE AND ALLOW VIEWERS TO SEE OVER THE HEAD OF THE PERSON IN FRONT, BUT THE QUALITY OF THE SEATING IS MUCH BETTER THAN ANYTHING YOU WILL FIND AT THE ODEON! EACH SEAT IS LEATHER, CUSHIONED ON ALL SIDES AND ELECTRONICALLY RECLINABLE VIA A BUTTON CONTROL ON THE SIDE. THERE ARE 3 ROWS OF SEATS WITH 4 IN EACH ROW FOR A TOTAL OF 12 PLUS A BAR AREA AT THE BACK WITH BAR STOOLS.

THE CINEMA IS ALSO EQUIPPED WITH INTERNAL BLINDS THAT ALLOW IT TO BE ISOLATED FROM THE GAMES ROOM WHICH SURROUNDS IT AND TO KEEP THE EXTERIOR LIGHT LEVEL DOWN FOR WATCHING MOVIES. THE ULTRA-HIGH BRIGHTNESS LEVEL OF THE PROJECTOR DOES ALLOW PERFECTLY GOOD VIEWING QUALITY IN ALL SITUATIONS THOUGH SO PEOPLE HAVING A POOL MATCH CAN EASILY KEEP AN EYE ON THE FOOTBALL GAME THROUGH THE GLASS SEPARATOR WALL IF NEEDED.



16. THE KITCHEN

THE VILLA KITCHEN OCCUPIES THE PERFECT POSITION IN THE MIDDLE OF THE MAIN FLOOR, DIRECTLY ADJACENT TO THE DINING AREA. IT IS SEPARATED BY A GLASS WALL THAT ALLOWS A VIEW OF FOOD PREPARATION AND SERVING. THIS CREATES A BIT OF 'THEATRE' IF OUR VILLA CHEF HAS BEEN HIRED FOR THE EVENING.

THERE ARE A WIDE RANGE OF MODERN APPLIANCES TOO NUMEROUS TO LIST BUT INCLUDING 2 LARGE OVENS, INDUCTION HOB, AMERICAN SIZED FRIDGE FREEZER (THERE IS A SPARE IN THE UTILITY ROOM IN THE BASEMENT), MICROWAVE, COFFEE MACHINE AND 2 FULL SIZED DISHWASHERS.

THE KITCHEN IS BUILT AROUND A LARGE 'U' SHAPED WORK AREA WITH AMPLE WORKSPACE AND A LONG BREAKFAST BAR WITH SEATING. AT EACH SIDE OF THE WORK AREA THERE ARE FURTHER COUNTER TOPS AND A MASSIVE AMOUNT OF CUPBOARD AND DRAWER STORAGE WITH EVERY CONCEIVABLE TYPE OF DISHWARE, CUPS AND GLASSES.



MANY ITEMS ARE CUSTOM DESIGNED AND BEAR THE SILVERFIELD LOGO INCLUDING THE CUTLERY AND WINE GLASSES.

IT IS A COMMON EVENT AT THE VILLA FOR GUESTS TO BOOK OUR PRIVATE CHEF AND HAVE HIM PREPARE A MEAL IN FRONT OF THE GUESTS. WE ALSO HAVE A QUALIFIED SOMMELIER WHO ASSISTS IN THE TABLE LAYOUT AND SERVING WINE. AN AMAZING WAY TO SPEND AN EVENING AND NO MORE EXPENSIVE THAN A DECENT RESTAURANT...

17. THE DINING AREA

THE DINING AREA IS DIRECTLY ADJACENT TO THE KITCHEN BETWEEN THE LIVING AREA AND MAIN STAIRCASE. IT IS A LARGE SPACE THAT CAN EASILY BE CLEARED OF TABLES TO ALLOW DANCING OR OTHER PARTY FUNCTIONS.

THE NORMAL CONFIGURATION IS AS A SINGLE LONG TABLE WHICH ALLOWS SEATING FOR 16 PEOPLE ON THE SIDE AND 4 MORE ON THE ENDS. THIS TABLE CAN BE SPLIT FOR LARGER GROUPS ALLOWING AN EXTRA 2 SEATS AT EACH END FOR A TOTAL CAPACITY OF 24.



18. THE FAMILY AREA

THE FAMILY ROOM IS ALSO ON THE MAIN LEVEL AND OFFERS A WONDERFUL LOCATION LOOKING OUT OVER THE OUTDOOR POOL THROUGH FLOOR TO CEILING WINDOWS. A PERFECT PLACE TO RELAX WHILE KEEPING AN EYE ON THE KIDS PLAYING OUTSIDE.

THE ROOM OFFERS YET ANOTHER LARGE SPACE BUT IS ISOLATED FROM THE OPEN PLAN FORMAT OF THE REST OF THE MAIN FLOOR BY A GLASS WALL AND DOUBLE GLASS DOORS. THERE IS NO TV IN THIS ROOM AS WE WANTED TO CREATE A SPACE MORE SUITABLE FOR READING OR FAMILY PLAY.

19. THE LIVING AREA

THE MAIN LIVING AREA IS OUR FAVOURITE SPACE IN THE VILLA. IT IS COMPLETELY OPEN PLAN ACROSS THE ENTIRE FLOOR, PARTIALLY SEPARATED ONLY BY THE KITCHEN, THE FIREPLACE AND THE MAIN STAIRCASE. IT IS THE AREA THAT GUESTS WILL SPEND THE MOST TIME DURING VISITS TO THE VILLA.

THE SEATING AREA CONSISTS OF 2 "U SHAPED" LEATHER SOFAS THAT SEAT 6-8 PEOPLE EACH. ONE OF THEM, IS ANGLED TOWARDS THE LIVING AREA BALCONY AND THE VIEWS TO GRANADA BELOW, THE OTHER IS TURNED INWARDS TOWARDS A WALL MOUNTED 80" LED TV WITH CABLE AND MEDIA STREAMING BOX.

THE AREA HAS THE USUAL ROOF MOUNTED LED ILLUMINATION AND ALSO A SERIES OF LARGE CURVED FLOOR STANDING LAMPS THAT PROVIDE A SOFTER GLOW. IT IS SEPARATED FROM THE DINING AREA BY THE CUSTOM DESIGNED FIREPLACE UNIT WITH SEALED REAL WOOD FIRE FOR USE DURING THE WINTER MONTHS. THIS FIRE IS IN THE MIDDLE OF THE LIVING SPACE BUT HAS A SPECIALLY DESIGNED VERTICAL FLUME THAT PASSES ALL THE WAY UP TO THE 4TH FLOOR.

ON THE OUTSIDE OF THE SEATING AREA IS THE MAIN BALCONY, ACCESSED BY 3 FULL SIZED SETS OF SLIDING GLASS DOORS. THIS BALCONY OFFERS VIEWS DOWN TO THE CITY AND HAS 3 SETS OF RATTAN FURNITURE RANGING FROM A WRAPAROUND SOFA TO A 6 PERSON BAR. ON THE OTHER SIDE OF THE FIREPLACE IS THE DINING AREA WITH OUR HUGE DINING TABLE THAT CAN SEAT UP TO 20 PEOPLE AT A TIME. IF MORE THAN 20 SEATS ARE REQUIRED, THE TABLE CAN BE SPLIT IN TWO AND ALLOWS AN EXTRA 2 SEATS AT EACH END FOR A TOTAL CAPACITY OF 24 PEOPLE.

MOVING INWARDS, WE COME TO THE SPECTACULAR MAIN STAIRCASE WHICH SPLITS THE LIVING AREA AND ACTS AS THE MAIN FOCAL POINT OF THE VILLA. THE STAIRCASE IS ON 2 LEVELS DUE TO THE LARGE CEILING HEIGHTS AND HAS GLASS SIDEWALLS ILLUMINATED BY INTERNAL GREEN LEDs. IN THIS AREA, THE LIVING SPACE IS "TRIPLE HEIGHT" OFFERING VIEWS UP TO THE MAIN BEDROOM AND MASTER BEDROOM LEVELS AS WELL AS THE GLASS BALCONY FROM THE GYM.

FURTHER TOWARDS THE BACK OF THE VILLA, THE LIVING SPACE ALSO LOOKS DOWNWARDS INTO THE BASEMENT LEVEL AS IT HAS A GLASS BALCONY OVERLOOKING THE INTERNET ROOM.

THE FINAL PART OF THIS EXTENSIVE AREA IS TAKEN UP BY THE KITCHEN, FAMILY ROOM, STAIRCASE DOWN TO THE BASEMENT AND THE ACCESS AREA FOR THE 6 FLOOR INTERNAL GLASS ELEVATOR.

ARTWORK, SCULPTURES, DECORATIVE LIGHTING AND ENORMOUS PLANTERS (SOME 12 FEET HIGH) ARE DISTRIBUTED THROUGHOUT THE LEVEL.

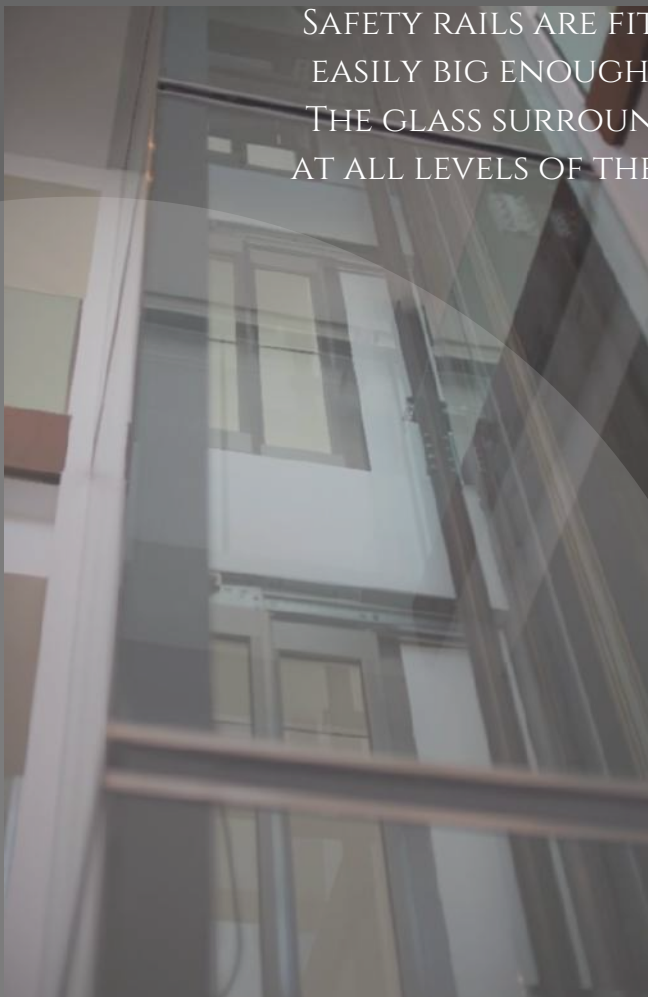
20. THE GLASS ELEVATOR

AS A CENTREPIECE TO THE VILLA, A 6 FLOOR INTERNAL GLASS ELEVATOR IS USED TO ACCESS ALL LEVELS. THIS IS A COMMERCIAL SYSTEM CAPABLE OF CARRYING UP TO 400KG IN WEIGHT AND IS LINKED TO AN EXTERNAL COMPANY BY THE ALARM BUTTON ON THE CONTROL PANEL.

THE CONTROLS ARE BRUSHED ALUMINIUM AND VERY SIMPLE TO USE. THE GREEN BUTTON IS MARKED "G" FOR GROUND FLOOR AND ALL OTHER BUTTONS ARE NUMBERED. "-1" FOR THE BASEMENT LEVEL, "1" FOR THE BEDROOMS, "2" FOR THE MASTER AND GYM LEVEL, "3" FOR THE PRIVATE BAR AND "4" FOR THE VIEWING DECK ON THE TOP FLOOR.

THE ELEVATOR IS CONNECTED TO AN OFF-SITE TELEPHONE SERVICE THAT CAN BE CONTACTED THROUGH THE "ALARM" BUTTON FOR SAFETY.

SAFETY RAILS ARE FITTED ALL THROUGH THE UNIT AND IT IS EASILY BIG ENOUGH TO BE USED FOR WHEELCHAIR ACCESS. THE GLASS SURROUND ALLOWS REALLY INTERESTING VIEWS AT ALL LEVELS OF THE VILLA AS THE ELEVATOR ASCENDS AND DESCENDS.



21. THE DUAL & QUAD SUITES

THERE ARE 3 DUAL SUITES AND ONE QUAD SUITE - ALL DOUBLE BEDS CAN BE SEPARATED INTO SINGLES.

THE DUAL AND QUAD SUITES ARE ALL LOCATED ON THE BEDROOM ROOM LEVEL ABOVE THE MAIN FLOOR. THEY OCCUPY THE CORNER AREAS ON THAT LEVEL OF THE VILLA.

THE DUAL SUITES ARE EXTREMELY SPACIOUS OFFERING A DOUBLE BED THAT CAN OPTIONALLY BE SEPARATED INTO 2 SINGLES. THE 2 SUITES AT THE FRONT OF THE VILLA ARE SLIGHTLY LARGER AND OFFER VIEWS OVER THE CITY.

EACH SUITE HAS A LOUNGE AREA WITH SEATING AND A LARGE DESK WITH COMFORTABLE OFFICE CHAIR AND ANDROID MEDIA BOX CONNECTED TO A MASSIVE 60" HIGH DEFINITION TV MONITOR. THE MEDIA BOX CAN BE USED TO ACCESS TV, MOVIES, SPORTS AND MUSIC USING THE KODI APP AND ALSO HAS FUNCTIONALITY FOR EMAIL, FACEBOOK AND WEB BROWSING.

THE SUITE ALSO FEATURES A SEPARATE TOILET AND SHOWER ROOM AS WELL AS A WALK IN WARDROBE CONTAINING SILVERFIELD VILLA BRANDED BATHROBES AND SLIPPERS.

THERE ARE TWO SETS OF BLINDS FITTED TO EACH BEDROOM, A PRIVACY SCREEN AND A BLACK OUT BLIND. THE PRIVACY SCREENS ALLOW SOME NATURAL LIGHT THROUGH IN THE DAYTIME OR CAN BE USED AT NIGHT IF THE GUEST PREFERS TO WAKE UP AT DAWN.

THE WALL MOUNTED TOUCH PANEL CAN BE USED TO ACCESS ALL THE SUITE FUNCTIONS SUCH AS HEATING/COOLING, BLINDS AND LED LIGHTING.

THE QUAD SUITE IS SIMILAR IN LAYOUT TO THE DUAL SUITES AND HAS THE SAME BATHROOM FACILITIES AND WALK IN WARDROBE BUT THE OFFICE/SEATING AREA HAS BEEN REPLACED BY A SECOND DOUBLE BED TO ALLOW MORE FLEXIBILITY FOR PARENTS OF SMALL CHILDREN WHO PREFER TO BE IN THE SAME ROOM.



22. THE BUNK ROOMS

THE BUNK ROOMS ALLOW A HUGE AMOUNT OF FLEXIBILITY FOR LARGER GROUPS STAYING AT SILVERFIELD VILLA. THEY OCCUPY THE MIDDLE SECTION AT BOTH THE FRONT AND THE BACK OF THE BEDROOM LEVEL AND DUE TO THIS THEY DO NOT HAVE THE PANORAMIC WINDOWS OF THE OTHER SUITES (ALTHOUGH THEY HAVE GOOD SIZED WINDOWS AT THE END. THIS MEANS THAT THE SUITES HAVE LESS WINDOW SPACE BUT MORE WALL SPACE AND WE DECIDED TO UTILISE THIS BY FITTING BUNK BEDS WHICH ALLOW UP TO 6 PEOPLE TO SLEEP IN EACH ROOM.

THE BASIC CONCEPT WAS TO PROVIDE ONE BUNK ROOM FOR GIRLS AND ONE FOR BOYS TO ALLOW THE CHILDREN OF GUESTS TO ALL SLEEP TOGETHER. WE FIND THAT THE KIDS ENJOY THIS AS EVERY NIGHT IS LIKE A 'SLEEPOVER' WITH THEIR FRIENDS AND IT ALSO ALLOWS THE PARENTS TO ENJOY THEIR SUITE WITHOUT CHILDREN IN THE ROOM WHICH SO OFTEN HAPPENS ON HOTEL HOLIDAYS.

THE BUNKS ARE HOWEVER, ALL FULL SIZE BEDS, SO THEY ARE EQUALLY SUITABLE FOR ADULTS SLEEPING DURING GROUP HOLIDAYS FOR HILL WALKING OR CYCLING ETC.

EACH BUNK ROOM ALSO HAS THE SAME FACILITIES AS THE SUITES WITH WALK IN WARDROBE, SEPARATE TOILET AND SHOWER ROOM AND EVEN A SMALL SEATING AREA.



23. THE MASTER ROOM

THE MASTER BEDROOM OCCUPIES HALF OF THE 4TH FLOOR OF THE VILLA. IT IS INCREDIBLY SPACIOUS CONTAINING AN OFFICE AREA, DOUBLE SINKS, FREE STANDING BATH, SHOWER ROOM AND A HUGE AMOUNT OF STORAGE SPACE SURROUNDED BY FLOOR TO CEILING GLASS WALLS ON TWO SIDES. THE BED IS POSITIONED IN AN ASPECT LOOKING OUT TOWARDS THE PRIVATE BALCONY AND DOWN TO THE CITY BELOW. THE BALCONY IS ACCESSED THROUGH A GLASS SLIDING DOOR AT THE FRONT OF THE BED. A MASSIVE MODERN TWIN SINK INSTALLATION ALSO LOOKS OUT ONTO THE BALCONY WITH AMPLE STORAGE SPACE BENEATH.

THE SHOWER UNIT IS SPECTACULAR, OCCUPYING ITS OWN CORNER OF THE VILLA, OUTSIDE OF WHICH IS THE ELEGANT FREE STANDING BATH WHICH PROVIDES VIEWS OVER THE NATIONAL PARK AREA BELOW (AS WELL AS BLINDS FOR PRIVACY). STORAGE AND WARDROBE UNITS IN THE MASTER BEDROOM ARE EXTENSIVE AND MORE THAN ANY GUEST WOULD NEED EVEN FOR A LONG STAY. THE BALCONY OUTSIDE THE MASTER BEDROOM IS HUGE AND CONTAINS 2 ASTRO-TURFED AREAS OF THE OUTDOOR GYM. A GUEST STAYING IN THIS SUITE CAN WALK A FEW SHORT FEET OUTSIDE FOR THEIR MORNING WORKOUT.



24. THE INDOOR GYM & JACUZZI



THE VILLA GYM IS TO BE FOUND ON THE 4TH LEVEL AND IS VERY WELL EQUIPPED FOR AN INDOOR WORKOUT BUT ALSO OFFERS DIRECT ACCESS TO THE OUTDOOR GYM WITH ITS CROSSFIT RIG, TRAINING AREA AND SLED TRACK. ALL THE EQUIPMENT IN THE GYM IS OF PROFESSIONAL QUALITY. A SMITH RACK IS PLACED AGAINST THE BACK WINDOW CLOSE TO A FULL SELECTION OF FREE WEIGHTS. A 4 WAY JUNGLE STACK IN THE MIDDLE OF THE GYM ALLOWS A MASSIVE RANGE OF EXERCISES AND A STORAGE AREA IN THE CORNER IS FULLY EQUIPPED WITH GYM MATS, TRAINING BALLS AND OTHER ITEMS. CARDIO IS CATERED FOR BY A PROFESSIONAL EXERCISE BIKE AND A COMPUTERISED TREADMILL THAT OFFERS A VIDEO SCREEN SHOWING JOGGING "VIEWS" FROM ALL CORNERS OF THE WORLD.

MOVING OUTSIDE, THE EXTERIOR GYM HAS A HUGE CROSSFIT TRAINING RIG MEASURING ALMOST 12 METERS IN LENGTH AND INCORPORATING LIFTING PILLARS, BALL TARGETS, MONKEY BARS, STEP FRAMES AND MORE. A SLED TRACK ALLOWS USE OF OUR WEIGHTED SLED AND A GENERAL TRAINING AREA IS USED FOR WARM UP, COOL DOWN AND A VARIETY OF BODY WEIGHT EXERCISES. THE GYM AREA IS SPECTACULAR, PROVIDING VIEWS ON TWO SIDES THROUGH FLOOR TO CEILING GLASS WINDOWS, AS WELL AS VIEWS INTO THE JACUZZI ROOM AND A GLASS BALCONY LOOKING DOWN 2 FLOORS INTO THE MAIN LIVING AREA. THE JACUZZI SITS IN A SEPARATE AREA ADJACENT TO THE GYM (SEPARATED BY A GLASS WALL). THE JACUZZI UNIT IS LARGE ENOUGH FOR TWO PEOPLE AND INCORPORATES AN EXTENSIVE JET SYSTEM AS WELL AS RELAXATION PILLOWS, ALL LOOKING OUT TO THE WALKING TRACK AT THE BACK OF THE VILLA. A DOUBLE SINK IS FITTED BETWEEN THE GYM AND JACUZZI ROOMS.

25. THE OUTDOOR GYM & CROSSFIT AREA

THE OUTDOOR GYM IS A NEW ADDITION FOR THE 2017 SEASON. IT WAS BUILT TO SATISFY THE HIGH LEVEL OF INTEREST THAT WE HAVE HAD FROM GUESTS WANTING TO USE THE VILLA AS A SPECTACULAR LOCATION FOR CROSSFIT TRAINING HOLIDAYS AND ALSO FROM CLIENTS INTERESTED IN YOGA OR GENERAL WELLBEING RETREATS. ESSENTIALLY, WE HAVE REPLACED THE 3 EXTERNAL AREAS ON THE GYM LEVEL, WHICH WERE PREVIOUSLY COVERED IN DECORATIVE STONES, WITH HIGH GRADE ALL WEATHER ASTROTURF. THE AREA ON THE BEDROOM LEVEL CONTAINS A MASSIVE CROSSFIT TRAINING RIG, OVER 7 METERS IN LENGTH WITH A WIDE RANGE OF EXERCISES INCLUDING STEP UP PLATES, MONKEY BARS AND LIFTING MOUNTS. THE GYM LEVEL CONTAINS AN AREA WHICH IS LONG AND THIN AND DESIGNATED FOR USE WITH WEIGHT SLEDS AS WELL AS A LARGER, MORE SQUARE AREA FOR GENERAL CROSSFIT BODY WEIGHT EXERCISES AND YOGA.



A THIRD AREA OVERLOOKING THE OUTDOOR POOL IS SUITABLE FOR KETTLE BELL AND LOOSE WEIGHT WORKOUTS. ALL 3 ASTROTURF AREAS ENJOY AN ELEVATED LOCATION OVERLOOKING THE MOST AMAZING VIEWS DOWN TO THE CITY OF GRANADA. IN ADDITION THE OUTDOOR GYM IS EQUIPPED WITH A FULL RANGE OF CROSSFIT EQUIPMENT. EVERYTHING FROM LOOSE WEIGHTS, POWER BALLS, WEIGHT BAGS, MATS, TRX, BATTLE ROPES, KETTLE BELLS, PLYOMETRIC BOXES, SKIPPING ROPES, SLEDS AND MORE. ALL EQUIPMENT IS STOWED IN CONVENIENT OUTSIDE STORAGE UNITS TO ALLOW EASY ACCESS WITHOUT HAVING TO CARRY ITEMS FROM THE INDOOR GYM. ALL GUESTS ARE OF COURSE VERY WELCOME TO USE THE OUTDOOR FITNESS FACILITIES OUT WITH THE SPECIALISED HOLIDAYS. WE JUST ASK THAT THE FITNESS EQUIPMENT IS RETURNED TO THE WATERPROOF EXTERIOR STORAGE AFTER USE TO PREVENT DAMAGE BY THE ELEMENTS. THE CROSSFIT RIG IS LOCATED AT THE SIDE OF THE VILLA ON THE BEDROOM LEVEL, OFFERING AMAZING VIEWS DOWN TO THE CITY OF GRANADA. . THE GYM AREA IS SPECTACULAR, PROVIDING VIEWS ON TWO SIDES THROUGH FLOOR TO CEILING GLASS WINDOWS, AS WELL AS VIEWS INTO THE JACUZZI ROOM AND A GLASS BALCONY LOOKING DOWN 2 FLOORS INTO THE MAIN LIVING AREA. THE JACUZZI SITS IN A SEPARATE AREA ADJACENT TO THE GYM (SEPARATED BY A GLASS WALL). THE JACUZZI UNIT IS LARGE ENOUGH FOR TWO PEOPLE AND INCORPORATES AN EXTENSIVE JET SYSTEM AS WELL AS RELAXATION PILLOWS, ALL LOOKING OUT TO THE WALKING TRACK AT THE BACK OF THE VILLA. A DOUBLE SINK IS FITTED BETWEEN THE GYM AND JACUZZI ROOMS.

26. THE PRIVATE BAR

SILVERFIELD VILLA HAS ITS OWN BAR ON THE 5TH FLOOR. THIS IS NOT A LIVING AREA WITH A DRINKS CABINET, IT IS A FULL FEATURED, CURVED, MARBLE TOPPED BAR WITH SERVING AREA, BAR STOOL SEATING, FRIDGES, SINK, SPIRIT BOTTLE SHELVING AND CEILING MOUNTED GLASS STORAGE. AT THE SIDE OF THE BAR IS A SEATING AREA WITH LEATHER SOFAS AND MODERN TABLES BESIDE A NUMBER OF MORE ELEVATED BISTRO STYLE TABLES AND CHAIRS SET AGAINST THE FLOOR TO CEILING WINDOWS LOOKING DOWN ON THE REST OF THE PROPERTY. AN 80" LED TV SYSTEM IS SUPPLEMENTED BY A SUB-WOOFER BASED SOUND SYSTEM TO PROVIDE MUSIC OR SPORTS THROUGH EITHER CABLE OR MEDIA BOX SOURCES.

A SPIRAL STAIRCASE LEADS UP TO THE TOP LEVEL VIEWING DECK AND AN LED ILLUMINATED STAIRCASE LEADS DOWN TO THE MASTER BEDROOM/GYM LEVEL. NEITHER OF WHICH ARE REALLY NECESSARY DUE TO THE INTERNAL GLASS ELEVATOR STOPPING AT ALL THESE FLOORS. THE BAR AREA ALSO EXTENDS TO THE OUTSIDE ONTO WHAT IS PROBABLY THE BIGGEST AND BEST BALCONY IN THE VILLA WITH ENOUGH SPACE FOR 40 PEOPLE AND INCREDIBLE VIEWS (DUE TO THE ELEVATION) DOWN TO THE CITY BELOW. THE BAR LEVEL BALCONY AREA HAS WHITE MARBLE FLOORING AND EXTERIOR LED LIGHTING. IT IS SEPARATED FROM THE BAR BY FLOOR TO CEILING GLASS WINDOW PANELS.



27. THE VIEWING DECK / MASSAGE ROOM

THE VERY TOP FLOOR OF SILVERFIELD VILLA IS A 360 DEGREE VIEWING DECK WHICH DOUBLES AS A MASSAGE ROOM. THE PANORAMIC FLOOR TO CEILING WINDOWS ALLOW AN UNOBSTRUCTED VIEW TO ALL SIDES OF THE VILLA FROM THE HIGHEST POSSIBLE POINT. A BALCONY TO THE OUTSIDE OF THIS ROOM GIVES THE BEST VIEWS IN THE HOUSE. THE ROOM IS CONNECTED TO THE BAR DOWNSTAIRS BY A SPIRAL STAIRCASE (OR USE THE ELEVATOR) AND IS VERY USEFUL FOR TAKING OVERSPILL FROM THE BAR AREA WHEN LARGER CROWDS ARE IN THE VILLA. THE VILLA HAS PROFESSIONAL MASSAGE TABLES WHICH CAN BE USED BY GUESTS ON YOGA OR FITNESS HOLIDAYS OR WE CAN PROVIDE A LOCAL MASSEUSE. THE BALCONY AREA ON THIS LEVEL IS AT THE SIDE RATHER THAN THE FRONT WHICH MEANS THAT THE VIEWS TO THE CITY ARE AVAILABLE THROUGH THE FLOOR TO CEILING GLASS FROM THE MASSAGE TABLE. A RANGE OF MODERN SEATING ALSO PROVIDES A QUIETER AREA, AWAY FROM THE REST OF THE HOUSE WHERE GUESTS CAN ENJOY A BOOK OR MAGAZINE.

28. THE WASHING MACHINES

THE VILLA IS EQUIPPED WITH AMPLE EQUIPMENT FOR GUESTS TO DO WASHING DURING THEIR STAY, OR FOR THE USE OF THE CLEANERS IF GUESTS OPT FOR THAT SERVICE. WE DECIDED TO INSTALL SEPARATE WASHER AND DRYER AS THIS ALLOWS ONE LOAD TO BE WASHING WHILE ANOTHER IS DRYING. THIS CAN BE IMPORTANT IF LARGE GROUPS OF PEOPLE ARE STAYING AT THE VILLA TOGETHER. IN ADDITION, WE HAVE 2 SEPARATE WASHER DRYER LOCATIONS. ONE IN THE LAUNDRY ROOM IN THE BASEMENT (WHERE THERE IS ALSO AN EXTRA FRIDGE FREEZER TO BE FOUND) AND ONE IN A MORE CONVENIENT LOCATION AT THE BEDROOM LEVEL.

THE BEDROOM LEVEL HAS A LARGE AREA OF SPACE AT THE TOP OF THE MAIN STAIRCASE AND WE HAVE FITTED THE WASHER AND DRYER INTO A NEAT CUPBOARD UNIT AT THE BACK WHICH GOES UNNOTICED WHEN NOT IN USE. WE FIND THAT THIS IS WHERE MOST GUESTS CHOOSE TO DO WASHING AS IT IS CONVENIENT FOR ALL OF THE BEDROOMS THAT ARE THE SOURCE OF THE CLOTHES AND TOWELS. THE VILLA ALSO HAS DRYING RACKS AVAILABLE FOR GUESTS WHO PREFER TO DRY THEIR CLOTHES IN THE CONSTANT GRANADIAN SUNSHINE.

29. RESTAURANTS

THE CUISINE IN GRANADA IS EXTENSIVE AND WIDELY VARIED. THE LIST BELOW IS JUST A FEW OF OUR FAVOURITES BUT MANY MORE OPTIONS ARE AVAILABLE ON THE WEB. A COUPLE OF USEFUL WEB LINKS ARE BELOW:

[HTTPS://THECULTURETRIP.COM/EUROPE/SPAIN/ARTICLES/THE-10-BEST-RESTAURANTS-IN-GRANADA/](https://theculturetrip.com/europe/spain/articles/the-10-best-restaurants-in-granada/)

[HTTPS://WWW.TRIPADVISOR.CO.UK/RESTAURANTS-G187441-GRANADA_PROVINCE_OF_GRANADA_ANDALUCIA.HTML](https://www.tripadvisor.co.uk/restaurants-g187441-granada_province_of_granada_andalucia.html)

ARRIAGA

THIS IS A VERY MODERN RESTAURANT IN AN EQUALLY MODERN LOCATION AT THE MUSEUM. IT IS A SPECTACULAR SETTING, HIGH UP IN THE MUSEUM BUILDING WITH VIEWS OVER THE WHOLE OF THE CITY. THE RESTAURANT IS VERY NARROW AND BOUND BY FLOOR TO CEILING GLASS ON EITHER SIDE WHICH ADDS TO THE SENSE THAT DINERS ARE 'FLOATING IN THE AIR'. FOOD IS EXCELLENT, VERY CONTEMPORARY AND SERVED BY HIGHLY ATTENTIVE STAFF. THEY NORMALLY OFFER A SAMPLING MENU CONSISTING OF AROUND 8 SMALL COURSES. WE HAVE DONE THIS A NUMBER OF TIMES AND ALWAYS BEEN IMPRESSED BY THE RANGE OF FLAVOURS AND QUALITY OF THE CUISINE. THE WINE LIST IS ALSO IMPRESSIVE. PRICES ARE AT THE HIGH END BUT LOWER THAN WOULD BE EXPECTED IN THE UK FOR THIS LEVEL OF SERVICE AND QUALITY. LOCATION IS GOOD FOR SILVERFIELD VILLA AS IT SITS A LITTLE TO THE WEST OF THE CITY VERY CLOSE TO THE A-44 WHICH MEANS THAT THE DRIVE THERE IS VERY EASY. DISTANCE IS AROUND 7 MILES.

[HTTPS://GOO.GL/MAPS/G137BPWZsZP2](https://goo.gl/maps/G137BPWZsZP2)

CAR PARKING IS NORMALLY EASY AS THE MUSEUM IS CLOSED IN THE EVENINGS. THERE IS AN AREA TO THE SIDE OF THE RESTAURANT WHICH IS EFFECTIVELY DIRECTLY BELOW IT (THE RESTAURANT CAN BE SEEN EASILY FROM THE ROAD AS YOU APPROACH). THIS IS A SMALL DEAD END ROAD WHICH HAS ALWAYS HAD SPACES WHEN WE VISITED. PARK THE CAR THERE AND WALK DOWN THE STEPS INTO THE MUSEUM (IT IS NOT VERY WELL SIGNPOSTED). AT THE BOTTOM OF THE STEPS, TURN LEFT AND THERE IS AN ENTRANCE WITH A SECURITY GUARD WHERE YOU WILL FIND THE ELEVATOR TO TAKE YOU TO ARRIAGA.



29. RESTAURANTS

RUTA DEL VELETA

THIS IS ANOTHER VERY HIGH END RESTAURANT BUT MUCH MORE TRADITIONAL THAN ARRIAGA (EVEN THOUGH THE PRESENTATION IS VERY MODERN). THIS IS THE PLACE TO GO TO EXPERIENCE THE VERY BEST OF TRADITIONAL SPANISH CUISINE.

THE LOCATION IS A WONDERFUL TRADITIONAL SPANISH BUILDING WITH A NUMBER OF DIFFERENT EATING AREAS TO CHOOSE FROM. IN THE WARMER MONTHS THE RESTAURANT OFFERS OUTSIDE EATING FROM THEIR PATIO AREA WITH DELIGHTFUL VIEWS TOWARDS THE CITY. IT IS WELL LOCATED FOR ACCESS FROM THE VILLA, BEING ON THE SOUTH SIDE OF THE CITY – TOTAL DRIVING DISTANCE AROUND 8 MILES.

[HTTPS://GOO.GL/MAPS/JFP8OJDJCFN](https://goo.gl/maps/JFP8OJDJCFN)



MIRADOR DE MORAYMA

THIS RESTAURANT IS IN THE VERY HEART OF GRANADA IN THE MOORISH ALBAICIN AREA OFFERING INCREDIBLE VIEWS DOWN TO THE ALHAMBRA BELOW. THE RESTAURANT INTERIOR IS NICE BUT GUESTS REALLY WANT TO BE SITTING OUTSIDE IN THE GARDEN AREA.

CUISINE IS TRADITIONAL SPANISH WITH EXCELLENT TAPAS. TRY ORDERING A WIDE SELECTION OF TAPAS FOR A LARGE GROUP AND SHARE THEM AS A STARTER TO ALLOW EVERYONE A WIDE SAMPLING. THE BLACK PUDDING (MORCILLA) AND OXTAIL CROQUETTES ARE BOTH EXCELLENT. PRICES ARE MEDIUM RANGE. THIS TYPE OF FOOD CAN BE FOUND MORE CHEAPLY IN OTHER LOCATIONS BUT THE LOCATION AND VIEW REALLY MAKES IT WORTH A VISIT. THE LOCATION IS A LITTLE HARD TO FIND AS THE ALBAICIN IS A VERY OLD (AND BEAUTIFUL) AREA WITH WINDING COBBLED STREETS. NO CARS ARE ALLOWED IN THIS PART OF GRANADA SO GUESTS NEED TO WALK AND THE FINAL PART IS UP A STEEP HILL. MOST WILL FIND THE WALK VERY ENJOYABLE HOWEVER, PASSING THE PLAZA NUEVA AND THE ALHAMBRA BEFORE HEADING UP INTO THE MOORISH QUARTER TO THE RESTAURANT.

[HTTPS://GOO.GL/MAPS/BSTLPWFtMMY](https://goo.gl/maps/BSTLPWFtMMY)

30. OTHER ACTIVITIES

THERE ARE MANY OTHER ACTIVITIES AVAILABLE IN THE LOCAL AREA, MOST OF THEM CONVENIENTLY SITUATED FOR THE VILLA.

ZERO GRAVITY TOURS

ZEROGRAVITYGRANADA OFFER A VARIETY OF DIFFERENT TOURS TO SUIT MOST INDIVIDUAL NEEDS AND PREFERENCES. HIKE, SWIM AND CLIMB YOUR WAY UP THE SPECTACULAR RIO VERDE, WITH THE CHANCE TO TEST YOUR NERVE WITH 4M TO 16M JUMPS INTO CRYSTAL CLEAR POOLS. EXPLORE WATERFALLS, HIKE THROUGH THE LABYRINTH OF CARVED LIMESTONE ROCK FORMATIONS OF EL TORCAL OR RELAX IN THE VARIOUS NATURAL HOTSPRING POOLS. ZERO GRAVITY OFFER A HUGE & VARIED RANGE OF TOURS!

QUOTE 'SILVERFIELD' WHEN BOOKING GROUPS OF 10 OR MORE FOR A DISCOUNTED RATE.

WEBSITE [HTTPS://ZEROGRAVITYGRANADA.COM](https://zerogravitygranada.com)



30. OTHER ACTIVITIES

KARTING

THE NEW KARTING CENTER IN GRANADA IS LESS THAN 10 MILES FROM THE VILLA AND HAS A VERY MODERN 700M TRACK. DIRECTIONS FROM THE VILLA CAN BE FOUND HERE

[HTTPS://TINYURL.COM/Y7ZFJPAH](https://tinyurl.com/y7zfjpaH) WEBSITE [HTTP://KARTINGGRANADA.ES/](http://kartinggranada.es/)



Compete with your friends

Enjoy a special MiniGP for groups and show your friends that you are the best.

[More information](#).



Bachelor party

There is nothing better than competing in a good race to go "warming up".

[More information](#).



Challenge your boss!

We have special offers for companies and events. Plan a corporate day outside the office.

[More information](#).



birthday

Celebrate your birthday in style on our exclusive circuit!

[More information](#).



GP2

Live the most demanding competition of Karting Granada through 24 laps!

[More information](#).



All prices

Check here all the prices and competition modalities of Karting Granada.

[More information](#).



30. OTHER ACTIVITIES

GOLF

SANTA CLARA GOLF COURSE IS VERY CLOSE TO THE VILLA AND IS THE BEST IN THE AREA WITH A MAGNIFICENT BACKDROP OF THE SIERRA NEVADA MOUNTAINS. DIRECTIONS FROM THE VILLA ARE HERE

[HTTPS://TINYURL.COM/YBNK6JO8](https://tinyurl.com/ybnk6jo8)

THE COURSE WEBSITE - [HTTP://WWW.SANTACLARAGOLFGRANADA.COM/](http://www.santaclaragolfgranada.com/)

OFFERS ONLINE BOOKING (IN ENGLISH) AND NORMALLY HAS SOME EXCELLENT OFFERS FOR FOURBALLS. CLUBS AND BUGGIES CAN BE HIRED ON SITE AND THE FACILITY HAS AN EXCELLENT CLUBHOUSE AND RESTAURANT.



30. OTHER ACTIVITIES

SKIING / SNOWBOARDING AND SKI ACTIVITIES

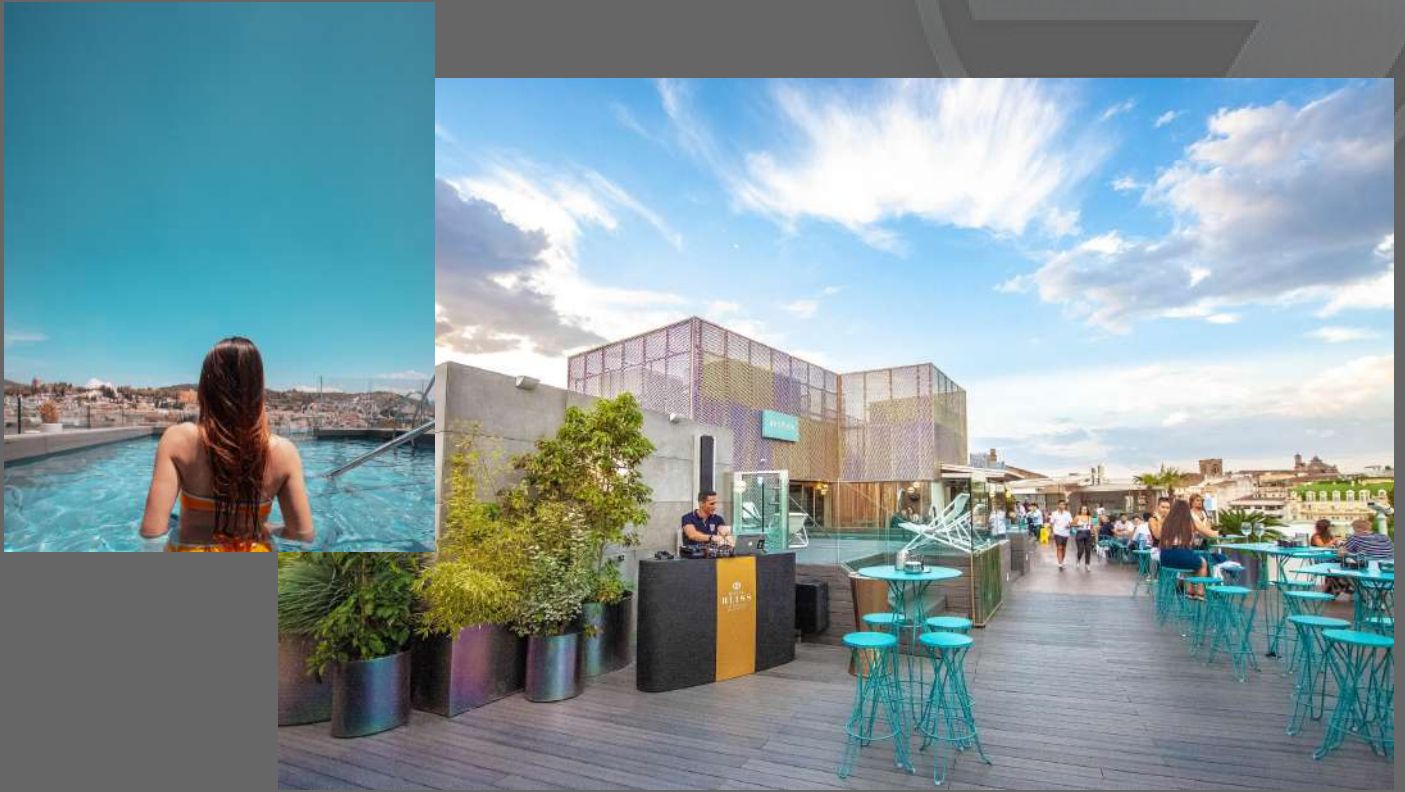
IN THE WINTER MONTHS FROM DECEMBER TO MARCH YOU CAN DRIVE AROUND 40 MINUTES TO SIERRA NEVADA SKI RESORT, ONE OF THE SUNNIEST SKI RESORTS IN THE WORLD REGARDLESS OF THE WINTER MONTHS. THE RESORT ALSO OFFERS A HUGE RANGE OF ACTIVITIES TO SUIT EVERYONE AND ALL AGES INCLUDING:

RUSSIAN SLEIGH
TOBOGGAN-RUNS
SIT-SKIING, SKATE SKIING, SKIBOBING
MINI-SKI, SNOWBOARD MINI
NIGHT SKIING
STARLIGHT STAR SPOTTING TOURS
SNOW GROOMER SUNSET RIDES
CHILDREN'S SNOWMOBILES
SKI OBSTACLE COURSES
GUIDED SNOW TOURS

[HTTPS://SIERRANEVADA.ES/EN/](https://sierranevada.es/en/)



30. OTHER ACTIVITIES



BHEAVEN BARCELO GRANADA

THIS SUMMER REVELATION TERRACE LOCATED ON THE ROOF OF THE EMBLEMATIC BARCELÓ CARMEN GRANADA HOTEL. ITS CENTRAL LOCATION IN THE HEART OF THE CITY, AND ITS 'INFINITY' DESIGN WITH WINDOWS THAT ALLOW AN UNOBSTRUCTED VIEW, HAVE TURNED IT INTO A PRIVILEGED OBSERVATORY OF THE 'SKYLINE' OF GRANADA. WITH A TERRACE POOL, BAR, DJ BOOTH WITH AN UPBEAT ATMOSPHERE IT IS THE PERFECT LUXURY EVENING OR AFTERNOON AWAY FROM THE VILLA .

SILVERFIELD VILLA GUESTS CAN ENJOY THIS STUNNING TERRACE IN TRUE VIP FASHION. AND RECEIVE THE BELOW ADVANTAGES BY PRE BOOKING YOUR TABLE:

- A COURTESY CAVA GLASS AFTER YOUR DINNER OR DRINKS ON THE TERRACE
- A BOTTLE OF CAVA FOR BIRTHDAY GUESTS
- EXCLUSIVE VIP TREATMENT
- GUARANTEE OF TWO RESERVED TABLES AT THE TERRACE

PLEASE NOTE BHEAVNE HAVE A LIMITED NUMBER OF TABLES AND VERY HIGH DEMAND SO WILL REQUIRE A MINIMUM OF 2 DAYS NOTICE. PLEASE CONTACT US FOR BOOKING.

30. OTHER ACTIVITIES



GRANADA SPIRIT YOGA

OUR LOCAL YOGA AND MEDITATION INSTRUCTOR, LINDA, SPECIALISES IN HATHA YOGA, YIN YOGA, ACT (ACCEPTANCE & COMMITMENT THERAPY) AND MEDITATION. LINDA HAS OUTSTANDING FEEDBACK FROM PREVIOUS GUESTS AND OFFERS A RANGE OF SPIRITUAL AND WELLBEING SERVICES.

IF YOU FANCY SOME RELAXATION AND WOULD LIKE TO HAVE A PROFESSIONAL OVER TO THE VILLA AND TAKE A CLASS THEN THIS CAN EASILY BE ARRANGED .

PLEASE CONTACT LINDA ON THE BELOW CONTACT INFO AND TAKE A LOOK AT HER WEBSITE FOR FURTHER INFORMATION AND COSTS:

+34 (633) 081001
INFO@GRANADASPIRIT.COM

WWW.GRANADASPIRIT.COM

30. OTHER ACTIVITIES

GRANADA TAPAS TOURS

GRANADA TAPAS TOURS HAS BEEN OFFERING EXPERIENTIAL TAPAS TOURS FOR OVER 12 YEARS. EVERY ROUTE IS UNIQUE. NO TWO TOURS ARE EVER THE SAME. IT'S MORE LIKE A "NIGHT OUT WITH FRIENDS" THAN A TOUR AS SUCH. VISIT DIFFERENT STYLES OF BARS WITH AN EXPERIENCED TAPA EXPERT AND LEARN ABOUT HISTORY, INTERESTING ANECDOTES & LOCAL LIFE IN GRANADA, ANDALUCIA AND SPAIN. SAMPLE DIFFERENT DRINKS, TASTE THE FOOD AND "EXPERIENCE" THE CITY. SO MUCH MORE THAN JUST A TAPAS TOUR (4 DRINKS / 6 TAPAS INCLUDED). TOURS SUITABLE FOR COUPLES, FRIENDS, FAMILIES, CORPORATE TEAM-BUILDING AND EDUCATIONAL GROUPS.

PHOTOGRAPHIC TREASURE HUNT
HISTORICAL ROLE PLAY
ALBAICIN WALK & TALK
LUNCH OR EVENING TAPAS TOURS
WINE TASTING
LOCAL LIFE FOOD AND FLAVOURS TOUR

CONTACT GAYLE FOR A FIVE EURO DISCOUNT PER HEAD QUOTING THAT YOU ARE STAYING AT SILVERFIELD VILLA.

[HTTP://WWW.GRANADATAPAS.COM](http://www.granadatapas.com)



30. OTHER ACTIVITIES

SEGWAY CITY TOURS

GRANADA IS PURE ART, A CITY FULL WITH CULTURE FROM THE ANCIENT WORLD. ITS ARABIC STRUCTURES SUCH AS THE ALHAMBRA, ALBAYCIN, ETC. WILL CHANGE YOUR CONCEPT OF BEAUTY. GRANADA IS MUCH MORE, AND THE BEST WAY TO DISCOVER IT ALL IS WITH ENSEGWAY.

ENSEGWAY OFFERS YOU A SEGWAY TOUR, A BIKE TOUR, AND A WALKING TOUR THROUGH GRANADA. ADMIRE THE SPECTACULAR VIEWS OF GRANADA FROM THE SAN NICHOLAS VIEWPOINT, A MUST SEE LOCATION IN OUR TOURS, ALSO THE ALHAMBRA, SACROMONTE AND MANY OTHER MONUMENTS.

ALL GUESTS AT THE VILLA CAN RECEIVE A 20% DISCOUNT BY QUOTING:

ENSGRLUXURY

[HTTPS://ENSEGWAY.ES](https://ensegway.es)



30. OTHER ACTIVITIES

AIR BALLOON RIDES

GLOVENTO SUR IS A PROFESSIONAL HOT AIR BALLOON, BASED IN THE CITY OF GRANADA, SPAIN. THE TOURIST PASSENGER FLIGHTS BEGIN AT DAWN, CLIENTS ARE PICKED UP AT A PREVIOUSLY ARRANGED MEETING POINT AND THEN TAKEN TO THE TAKE-OFF SITE.

OUR TOURIST PASSENGER FLIGHTS BEGIN AT DAWN. CLIENTS ARE PICKED UP AT A PREVIOUSLY ARRANGED MEETING POINT AND THEN TAKEN TO THE TAKE-OFF SITE. THE SITE DEPENDS ON THE WEATHER AND THE TYPE OF FLIGHT CHOSEN. WE FLY OVER GRANADA OR GUADIX.

ONCE THE BALLOON IS AIRBORNE, THERE ARE TWO FACTORS WHICH CAN AFFECT US – THE RELIEF OF THE LAND WITH ITS RESULTING WEATHER CONDITIONS, AND THE WAY THE FLIGHT DEVELOPS IN ITSELF. FLIGHTS LAST APPROXIMATELY ONE HOUR.

HAVING LANDED AND THE BALLOON DEFLATED WE PERFORM OUR “AIR BAPTISMS” AND PRESENT A DIPLOMA AS A MEMENTO OF SUCH A REWARDING EXPERIENCE. FINALLY, WE TREAT OUR CLIENTS TO BREAKFAST AND RETURN THEM TO THE DEPARTURE POINT.

DURATION OF THE ACTIVITY IN GENERAL 3 HOURS APPROXIMATELY.

[HTTPS://WWW.PARTNER.VIATOR.COM/EN/4107/TOURS/GRANADA/BALLOON-RIDE/D554-60225P1](https://www.partner.viator.com/en/4107/tours/granada/balloon-ride/d554-60225p1)



30. OTHER ACTIVITIES

AQUAOLA WATER PARK

THERE IS A WATER PARK JUST OUTSIDE GRANADA AND IS OPEN FROM 19TH JUNE UNTIL 1ST SEPTEMBER EASILY ACCESSIBLE BY CAR. IT HAS 10 ATTRACTIONS INCLUDING THE PIRATE GALLEON, THE TORNADO SLIDE, THE BLACK PIPE AND THE CYCLONE. ALSO VARIOUS SWIMMING POOLS, WATER SLIDES, A WAVE MACHINE AND A ZERO-GRAVITY SIMULATOR "EUROBUNGY".

IT ALSO HAS A SELF-SERVICE RESTAURANT, BAR, PICNIC AREA, SHOP (SELLING SWIMMING COSTUMES, TOWELS, ARM BANDS, SUNCREAM, ETC.), CLOAKROOM, CHANGING ROOMS WITH SHOWERS AND TOILETS, AND A LARGE CAR PARK.

THERE IS A SHOP SELLING SWIMMING COSTUMES, BIKINIS, SUNTAN LOTION, TOWELS, CHILDREN'S ARMBANDS, AND FLOATS.

[HTTPS://WWW.AQUAOLA.COM/EN/](https://www.aquaola.com/en/)



30. OTHER ACTIVITIES

GRANADA CITY & HISTORY

TRAVEL INTO SPAIN'S MOORISH AND CHRISTIAN HISTORY WITH EVERY STEP YOU TAKE IN COMPACT, WALKABLE GRANADA. THE FAMOUS ALHAMBRA FORTRESS IS A REQUIRED VISIT, AS ARE THE ALCAICERIA (MARKETPLACE), THE CATHEDRAL AND TOO MANY ARCHITECTURAL SITES TO NAME.

WANDER THROUGH GRANADA'S FASCINATING MOORISH OLD QUARTER, THE LABYRINTHINE ALBAICIN; THEN PLAN TO HEAD OUT AGAIN BY NIGHT, BECAUSE THE NIGHTLIFE HERE IS PARTICULARLY LIVELY.

LOCAL ATTRACTIONS AND TOURS INCLUDE:

- THE SCIENCE MUSEUM
- THE ALHAMBRA
- ALCAICERIA MARKET
- TAPAS WALKING TOUR
- HAMMAM AL ANDALUS ARAB BATHS
- MUSEUMS
- BARS AND NIGHTCLUBS
- CASINO
- BEER BIKE



31. SHOPPING

THERE ARE A NUMBER OF OPTIONS FOR SHOPPING IN THE AREA.

THE CLOSEST SUPERMARKET IS SUPERMERCADO DANI IN THE CENTRE OF LA ZUBIA. THIS IS A TYPICAL SMALL SPANISH SUPERMARKET WHICH IS WELL STOCKED. WE TEND TO USE IT FOR DAILY SUPPLIES SUCH AS BREAD, MILK AND EGGS.

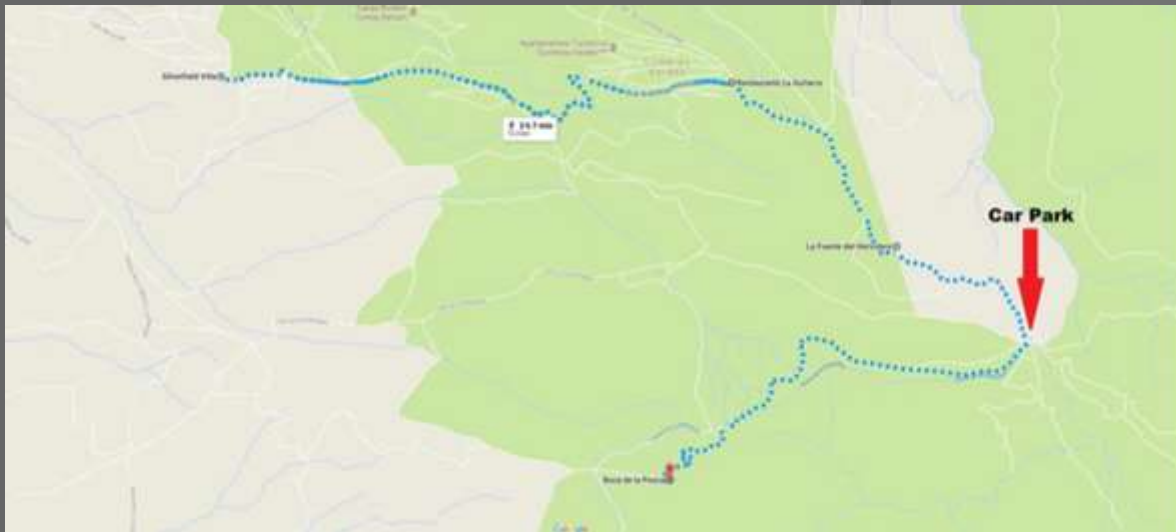
A LITTLE FURTHER DOWN AT THE EDGE OF LA ZUBIA, HEADING TOWARDS THE CITY, IS THE CENTRO COMERCIAL ALHSUR. THIS IS A DECENT SIZED SHOPPING MALL WITH A NUMBER OF SHOPPING UNITS INCLUDING A LARGE SUPERMARKET. THERE IS A CHOICE OF RESTAURANTS AS WELL AS PLAY AREAS FOR KIDS, EASY PARKING ETC.

THE BIGGEST AND BEST PLACE FOR FOOD AND DRINK SHOPPING IS THE MASSIVE CARREFOUR ON THE EDGE OF GRANADA. THEY HAVE AN AMAZING SELECTION OF VEGETABLES, MEATS AND FRESH FISH. WE NORMALLY DO A LARGE SHOPPING TRIP HERE SOON AFTER ARRIVAL TO STOCK UP FOR THE WEEK WHEN WE STAY.

FINALLY, A WONDERFUL NEW SHOPPING MALL NAMED NEVADA HAS OPENED IN 2017 WHICH HAS A HUGE RANGE OF SHOPPING UNITS THAT COVER EVERY CONCEIVABLE NEED. THIS MALL IS ONE OF THE BIGGEST IN SPAIN AND ITS LIGHTS CAN ACTUALLY BE SEEN FROM THE VILLA AT NIGHT.



32. HILL WALKING & CYCLING



THE VILLA SITE WAS CHOSEN AT THE OUTSET TO PROVIDE AN EXCELLENT LOCATION FOR HILL WALKING AND CYCLING AS THESE ARE PASSIONS OF THE OWNERS. THE PATH DIRECTLY BEHIND THE VILLA IS A DIRECT ACCESS INTO THE SIERRA NEVADA MOUNTAIN RANGE. GUESTS CAN SIMPLY WALK OUT THE DOOR TO ACCESS THE AMAZING VIEWS AND TRACKS THAT IT PROVIDES. OBVIOUSLY, THE SIERRA NEVADA RANGE COVERS AN ENORMOUS AREA, SO GUESTS LOOKING TO DO WALKS OR TRACKS FURTHER AFIELD CAN USE THE VILLA CAR OR OUR TRANSPORT SERVICE TO BRING THEM TO OTHER ACCESS POINTS IN THE AREA.

FOR ROAD CYCLISTS, THE VILLA IS ALSO AN EXCELLENT STARTING POINT. THE ROADS DOWN TO LA ZUBIA ARE HIGH QUALITY AND PROVIDE ACCESS TO THE MAIN SIERRA NEVADA ROUTE (TOWARDS THE SKI STATION) WITHOUT HAVING TO PASS THROUGH THE CITY. THIS ROAD PROVIDES ACCESS TO A NUMBER OF CYCLE ROUTES WITH HIGH VERTICAL ASCENTS AND A LOW AMOUNT OF TRAFFIC. FOR MOUNTAIN BIKING, THE VILLA HAS A RANGE OF BIKES INCLUDING STANDARD MOUNTAIN BIKES, FOLDING MOUNTAIN BIKES (EASIER TO TRANSPORT BY CAR) AND OUR NEW ELECTRIC MOUNTAIN BIKES WHICH TAKE A LOT OF THE PHYSICAL WORK OUT OF THE STEEP TRACKS AROUND THE PROPERTY.

ONE OF THE BEST HILL WALKING ROUTES IS TO THE NEAREST PROMINENT PEAK, BOCA DE LA PESCA WHICH IS OVER 5,000 FEET ALTITUDE. THE ROUTE BELOW IS NOT THE SHORTEST ONE POSSIBLE BUT IT INCLUDES THE LOCATIONS OF A COUPLE OF RESTAURANTS WITH EXCELLENT VIEWS THAT CAN BE USED FOR DRINKS ON THE WAY UP OR DOWN. THEY BOTH SERVE FREE TAPAS. THE CAR PARK (MARKED) IS A STARTING AREA FOR A NUMBER OF OTHER PEAKS, SOME OVER 7,000 FEET. GOOGLE MAPS CAN BE USED FOR THESE LOCATIONS ON ANY SMART

PHONE. [HTTPS://GOO.GL/MAPS/RRCkRMDAE6K2](https://goo.gl/maps/RRCkRMDAE6K2)

33. PERSICI BAY CLOTHING DISCOUNT

THE BRAND

PERSICI BAY IS A NEW PREMIUM WOMEN'S ACTIVEWEAR FASHION BRAND HEADQUARTERED IN THE UK. PERSICI BAY CREATES DURABLE AND LUXURIOUS ACTIVEWEAR TO HAVE YOU WORKING OUT IN COMFORT AND IN STYLE.

WITH THE VILLA ITSELF BEING FITNESS-FOCUSED WE WANTED TO PARTNER WITH A STRONG NEW BRAND THAT WOULD REFLECT LUXURY, A FRESH AND UNIQUE LOOK AS WELL OUTSTANDING CUSTOMER SERVICE FOR OUR GUESTS.

OFFERING ALL OUR GUESTS AN EXCLUSIVE OFFER OF 15% OFF THEIR WEBSITE:

[HTTPS://PERSICIBAY.COM](https://persicibay.com)

USING CODE: PBVILLA15

IT MEANS YOU CAN STOCK UP ON FITNESS WEAR FOR YOUR STAY LOOKING GLAM AT THE SAME TIME! EVERYTHING FROM THE LUXURY BOXES AND BRANDED TISSUE PACKAGING YOUR GORGEOUS ITEMS MAKE THIS BRAND SPECIAL FROM THE SECOND YOU GET YOUR DELIVERY, WE ARE HOOKED AND ARE POSITIVE YOU WILL BE TOO!

THEIR MISSION

FROM COUNTLESS SIZING, QUALITY AND PERFORMANCE FRUSTRATIONS WITH ACTIVEWEAR CURRENTLY AVAILABLE ON THE MARKET, THEIR MISSION IS SIMPLE, DESIGN AND PRODUCE PREMIUM ACTIVEWEAR WHICH IS DURABLE, ON TREND AND HIGH PERFORMING. ALL OF THEIR GARMENTS ARE DESIGNED IN-HOUSE, WITH EACH PIECE DESIGNED TO BE FORM-FITTING TO SCULPT AND ENHANCE THE FEMALE PHYSIQUE. RIGOROUS TESTING HAS BEEN CARRIED OUT ON FABRIC TECHNOLOGY TO ENSURE DURABILITY AND LONGEVITY OF ALL THE GARMENTS. PRODUCT QUALITY IS OF HUGE IMPORTANCE TO PERSICI BAY, THEIR KEY FOCUS IS CONTINUAL IMPROVEMENT OF FABRICS AND DESIGN.



34. THE VILLA PRIVATE CHEF

ONE OF THE GREAT EXPERIENCES AT SILVERFIELD VILLA IS TO HAVE OUR CHEF COME TO THE PROPERTY AND PREPARE FOOD FOR THE GUESTS. OUR CHEF, SUE IS FROM LONDON BUT LIVES LOCALLY IN LA ZUBIA. SUE CAN PREPARE A VARIETY OF DIFFERENT MEALS ACCORDING TO THE OCCASION AND COST DESIRED. AT THE MOST BASIC LEVEL, A PAELLA EVENING IS AN EXCELLENT AND LOW-COST WAY TO FEED A LARGE GROUP. FOR SOMETHING WITH A BIT MORE VARIETY, SUE CAN PREPARE A TAPAS EVENING WITH A RANGE OF DISHES SERVED BY ENGLISH OR SPANISH SPEAKING STAFF.

FOR A MORE FORMAL DINNER, WE CAN OFFER A 3-COURSE MEAL SERVED IN OUR DINING AREA WITH A CHOICE OF COURSES AND OPTIONS FOR WINE PAIRING. FINALLY, AT THE HIGH END, WE CAN OFFER A FULL 6 COURSE SAMPLING MENU WITH AN OPTION FOR WINE PAIRING. ALL COURSES ARE SERVED WITH A FOCUS ON LOCAL AND SEASONAL INGREDIENTS. FOR THE SIT-DOWN DINNERS, GUESTS GENERALLY TAKE DRINKS IN THE LIVING, DINING AND MAIN PATIO AREAS WHILE KEEPING AN EYE ON THE FOOD PREPARATION (AND OCCASIONALLY SAMPLING THE PRODUCE).

CLOSER TO THE TIME OF THE MEAL, OUR GUESTS NORMALLY HEAD TO THE BEDROOMS TO DRESS IN MORE FORMAL ATTIRE AS IT ADDS TO THE OVERALL EXPERIENCE. BY THE TIME THEY RETURN, THE TABLES LOOK SPECTACULAR AND THE MEAL IS READY TO COMMENCE.

THE SERVICE IS ALWAYS EXCELLENT AND WE HAVE NEVER BEEN DISAPPOINTED BY ANY OF THE COURSES SERVED. WE ALSO HAVE MANY REVIEWS FROM OUR GUESTS ON AIRBNB, HOMEAWAY AND FACEBOOK WITH ONLY THE HIGHEST COMPLIMENTS PAID TO THE TEAM. WE OFFER A SEPARATE DOCUMENT WHICH DESCRIBES THE OPTIONS IN MORE DETAIL AS WELL AS THE PRICING WHICH WE ARE SURE GUESTS WILL FIND COMPETITIVE. HOWEVER, WE ARE HUGELY FLEXIBLE IN TERMS OF THE MEAL SERVICE WE PROVIDE AND ARE HAPPY TO DISCUSS OPTIONS FOR VEGETARIANS, SPECIAL MAIN DISHES AND THE USE OF THE BBQ AREA FOR EATING AL-FRESCO.

FOR THE SAMPLING MENU, WHEN THE MEAL IS OVER, WE GENERALLY FINISH WITH LIQUEURS AND THEN HEAD UP TO THE PRIVATE BAR WITH A BARMAN TO SERVE DRINKS WHILE THE DINING AREA IS CLEARED BY SUE AND HER STAFF. BY THE TIME WE COME BACK DOWN, THE DINING AREA AND KITCHEN ARE COMPLETELY CLEARED AND THE TWO DISHWASHERS ARE FILLED WITH ALL OF THE PLATES, GLASSES AND CUTLERY. IT REALLY IS A VERY NICE WAY TO SPEND AN EVENING... GUESTS ARE FREE TO BUY THEIR OWN DRINKS FOR THE MEAL AND FOR STOCKING THE BAR. WE WILL BE HAPPY TO SERVE THEM. ALTERNATIVELY THE DRINKS CAN BE ADDED TO THE SERVICE; THERE ARE SOME VERY HIGH QUALITY LOCAL WINES FROM THE AREA THAT ARE WORTH CHECKING OUT. WE ARE ALWAYS HAPPY TO DISCUSS. ONE FINAL TIP IN WINTER IS THAT WE OFTEN REQUEST FOR THE MEAL TO START JUST AFTER SUNSET. THE SUNSETS IN GRANADA CAN BE SPECTACULAR AND IT IS A GREAT EXPERIENCE TO WATCH ONE FROM THE BALCONY BEFORE SITTING DOWN TO A TOP-CLASS MEAL.

35. LOCAL HOSPITAL & DOCTOR

THERE IS A LOCAL DOCTORS OFFICE IN LA ZUBIA WHICH HAS A SMALL EMERGENCY UNIT.

THE ADDRESS IS: CENTRO SALUD LA ZUBIA CUESTA CORVALES, 5, 18140 LA ZUBIA, GRANADA

THE NEAREST HOSPITAL IS AROUND 15 MINUTES FROM THE VILLA BY CAR AND IS LOCATED BY THE LARGE NEVADA SHOPPING CENTER.

THE ADDRESS IS: HOSPITAL PARQUE TECNOLÓGICO DE LA SALUD. (PTS) AVENIDA. DE LA INVESTIGACIÓN 2, 18016 GRANADA.



36. OTHER SERVICES

IN ADDITION TO THE PRIVATE CHEF, SILVERFIELD VILLA CAN OFFER A NUMBER OF OTHER SERVICES TO ENHANCE THE HOLIDAY EXPERIENCE OF OUR GUESTS. WE HAVE MADE CONTACT WITH A NUMBER OF LOCAL COMPANIES AND INDIVIDUALS DURING THE CONSTRUCTION OF THE VILLA AND HAVE VETTED THEM ALL PERSONALLY. WE DO NOT TAKE ANY PAYMENT OR COMMISSIONS WHATSOEVER FROM ANY OF OUR CONTACTS, THEY HAVE BEEN CHOSEN BECAUSE OF THE QUALITY AND RELIABILITY OF THEIR SERVICE.

VILLA MANAGER

OUR VILLA MANAGER PROVIDES A DIRECT CONTACT FOR OUR GUESTS LOCALLY IN GRANADA DURING THEIR STAY AND ALSO PRIOR TO ARRIVAL FOR ANY SERVICES OR BOOKINGS THAT NEED TO BE MADE IN ADVANCE. HE WILL MEET EACH GROUP ON ARRIVAL AT THE VILLA AND SHOW THEM THE PROPERTY AND THE VARIOUS CONTROL FUNCTIONS OF THE TOUCH SCREENS, CINEMA, ALARM SYSTEM, DOOR ENTRY, WI-FI AND COMPUTERS. HE CAN ALSO ORGANISE A WIDE RANGE OF ACTIVITIES DURING YOUR STAY AND IS THE SINGLE POINT OF CONTACT FOR ANY ISSUES WITHIN OR OUTSIDE THE VILLA. HE WILL PROVIDE YOU WITH HIS MOBILE NUMBER. CACHO CAN RECOMMEND RESTAURANTS (AND MAKE BOOKINGS), ORGANISE GUIDED TOURS OF THE CITY, AND GET SPECIAL ACCESS INTO NIGHTCLUBS. HE CAN ARRANGE TRANSPORT, MUSICIANS, CHILDREN'S ENTERTAINMENT AND A WIDE RANGE OF OTHER SERVICES. HIS SERVICES ARE FREE TO ALL GUESTS OF THE VILLA.

DAILY CLEANING

THE CLEANING SERVICE AT THE END OF THE STAY IS INCLUDED IN THE PRICE BUT GUESTS CAN CHOOSE TO PAY EXTRA FOR ADDITIONAL CLEANING SERVICES. POSSIBLY ONCE OR TWICE DURING THE WEEK OR ON A DAILY BASIS IF PREFERRED. THE CLEANERS ARE VERY INEXPENSIVE, NORMALLY AROUND 10 EUROS PER HOUR.

WEDDINGS

WE HAVE HAD A NUMBER OF BOOKINGS NOW FOR WEDDINGS AT THE VILLA AND HAVE A RANGE OF CONTACTS THAT CAN HELP. ANYTHING FROM A BAND OR DJ UP TO A FULL LOCAL WEDDING PLANNER SERVICE. THE VILLA IS AN EXCELLENT LOCATION FOR SMALL WEDDINGS DUE TO THE LARGE NUMBER OF BALCONIES WITH AMAZING VIEWS. THE MAIN LIVING AREA OR PRIVATE BAR AREA PROVIDE GOOD LOCATIONS FOR BAND OR DJ AND THE WEDDING MEAL CAN BE LOCATED INSIDE IN THE DINING AREA OR OUTSIDE IN THE BBQ AREA.

WE CAN PROVIDE SPECIAL DECORATIONS AND LIGHTING AS WELL AS SERVING STAFF AND MANY OTHER OPTIONS. WE ALSO HAVE A NUMBER OF EXCELLENT LOCATIONS IF GUESTS WOULD PREFER A CHURCH WEDDING, INCLUDING THE ALHAMBRA ITSELF...

36. OTHER SERVICES

MUSICIANS

WE CAN OFFER A VARIETY OF MUSICAL ENTERTAINMENT USING LOCAL MUSICIANS AT THE VILLA. EVERYTHING FROM A SINGLE ACOUSTIC SPANISH GUITARIST TO A FULL BAND. THERE ARE A NUMBER OF AREAS IN THE HOUSE, BOTH INTERNAL AND EXTERNAL WHERE MUSICIANS CAN SET UP AND PERFORM.

CHILDREN'S ENTERTAINMENT

FOR THE KIDS, WE ARE ABLE TO OFFER A RANGE OF ENTERTAINMENT SUCH AS CLOWNS, FACE PAINTING AND MAGICIANS AS WELL AS 'PLAY DATES' WHERE OUR STAFF WILL TAKE THEM TO A SEPARATE AREA IN THE VILLA AND PLAY GROUP GAMES AND OTHER ACTIVITIES. WE CAN ALSO PROVIDE QUALIFIED LIFE GUARDS TO SUPERVISE THE POOL AREAS IF GUESTS WOULD PREFER TO BE DOING OTHER THINGS WHILE THE CHILDREN SWIM. FINALLY, WE CAN ORGANISE TRIPS OUTSIDE THE VILLA TO LOCATIONS LIKE THE WATER PARK OR THE SCIENCE MUSEUM.

WWW.SILVERFIELDVILLA.COM

SHARE YOUR STORY AT SILVERFIELD VILLA WITH US:
FACEBOOK AND INSTAGRAM
@SILVERFIELDVILLA